



Configuring the
OLI Engine for PRO/II™



think simulation



getting the
chemistry right

Introduction to OLI Engine for PRO/II™

© 1997-2025 OLI Systems, Inc.

The enclosed materials are provided to the lessees, selected individuals and agents of OLI Systems, Inc. The material may not be duplicated or otherwise provided to any entity without the expressed permission of OLI Systems, Inc.

OLI Engine for PRO/II™

Contact Information

If you need to contact Support, you can submit an online request via OLI Support Center:
<https://support.olisystems.com>

Other useful links and resources are:

Product Downloads: <http://downloads.olisystems.com/>

Support Center: <https://support.olisystems.com/>

Alliance Configuration Guides: <https://support.olisystems.com/hc/en-us/sections/44539646996115-Alliance-Product-Configuration-Guides>

OLI Engine for PRO/II™: <https://support.olisystems.com/hc/en-us/sections/28990936576659-OLI-Engine-for-PRO-II%E1%B5%80%E1%B4%B9>

Disclaimer

This manual was produced using the OLI Engine for PRO/II™

As time progresses, new data and refinements to existing data sets can result in values that you obtain being slightly different than what is presented in this manual. This is natural progress and cannot be avoided. When large systematic changes to the software occur, this manual will be updated.

Trademarks

AVEVA™ and PRO/II™ are trademarks or registered trademarks of AVEVA Group Limited and its subsidiaries. All other trademarks mentioned herein are the property of their respective owners.

OLI, OLI Systems and the “OLI Engine in PRO/II” are trademarks of OLI Systems, Inc. Parsippany, New Jersey, USA

Table of Contents

DISCLAIMER.....	2
TRADEMARKS.....	2
TABLE OF CONTENTS.....	3
OVERVIEW.....	4
Simplifying the Installation of OLI Engine for PRO/II™	4
Typical Installation Scenario.....	5
Scenario 1: Installing OLI Engine Without Previous Versions	5
Open the Configuration Tool:	5
Launch the Tool:.....	5
Configure PRO/II™:.....	6
Scenario 2: Installing OLI Engine with Previous Versions	9
Open the Configuration Tool:	9
Choose the OLI Engine Version:.....	9
Keeping Your Configuration Up-to-Date.....	10
Trademark Notice:.....	11

Overview

At OLI, our goal is to simplify complex processes for non-IT professionals, making advanced software tools accessible and easy to use. This manual aims to guide users through the seamless integration of the OLI Electrolyte Model within PRO/II using our automated configuration tool. This tool simplifies the traditionally complex task of configuring system registry links, ensuring a smooth connection between the two products.

Simplifying the Installation of OLI Engine for PRO/II™

For non-IT professionals, the technical aspects of integrating complex software systems can seem daunting. At OLI, we strive to simplify these processes, making advanced tools accessible and user-friendly. One such example is the integration of the OLI Electrolyte Model within PRO/II, a task traditionally complex due to the need for configuring system registry links. To address this, we've developed an intuitive configuration tool that automates the process, ensuring seamless connectivity between the two products.

Typical Installation Scenario

In a typical setup, users first install the PRO/II software, followed by the OLI Engine. Ideally, this sequence should establish the necessary links automatically, allowing the OLI Electrolyte Model to function within PRO/II without additional intervention. However, users may encounter two main scenarios:

1. **Single Installation:** Where a single version of PRO/II is installed, and the OLI Engine is either being added or upgraded.
2. **Multiple Installations:** Where multiple versions of PRO/II and the OLI Engine exist on the same system.

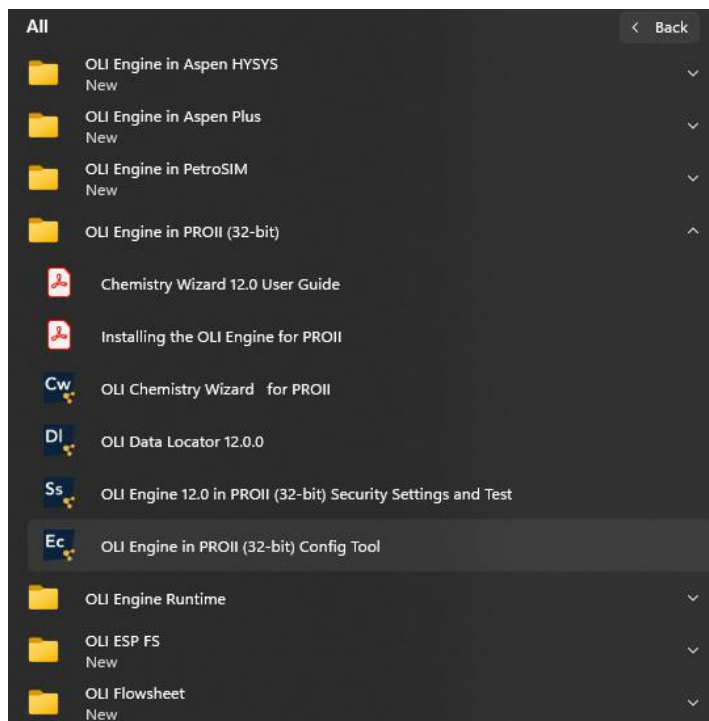
Our guide covers both scenarios to ensure you can handle either situation with ease.

Scenario 1: Installing OLI Engine Without Previous Versions

For systems without previous OLI installations, follow these steps:

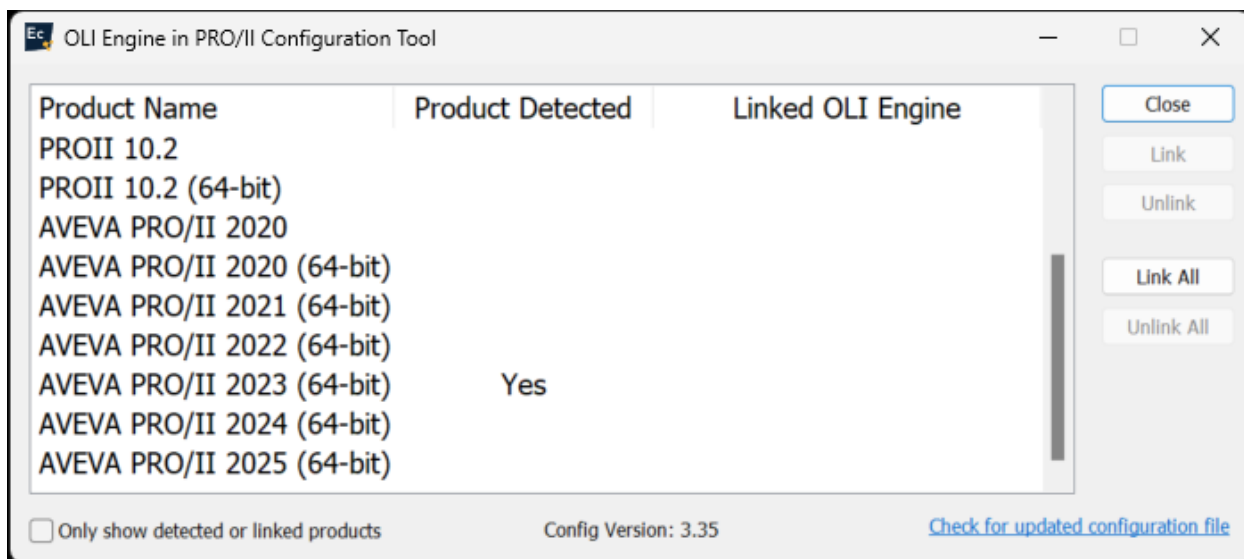
Open the Configuration Tool:

- Navigate to the O folder in the Start Menu.
- Navigate to the OLI Engine in PRO/II folder
- Select the OLI Engine in PRO/II Config Tool.



Launch the Tool:

- If prompted by the operating system to allow changes, click "YES".

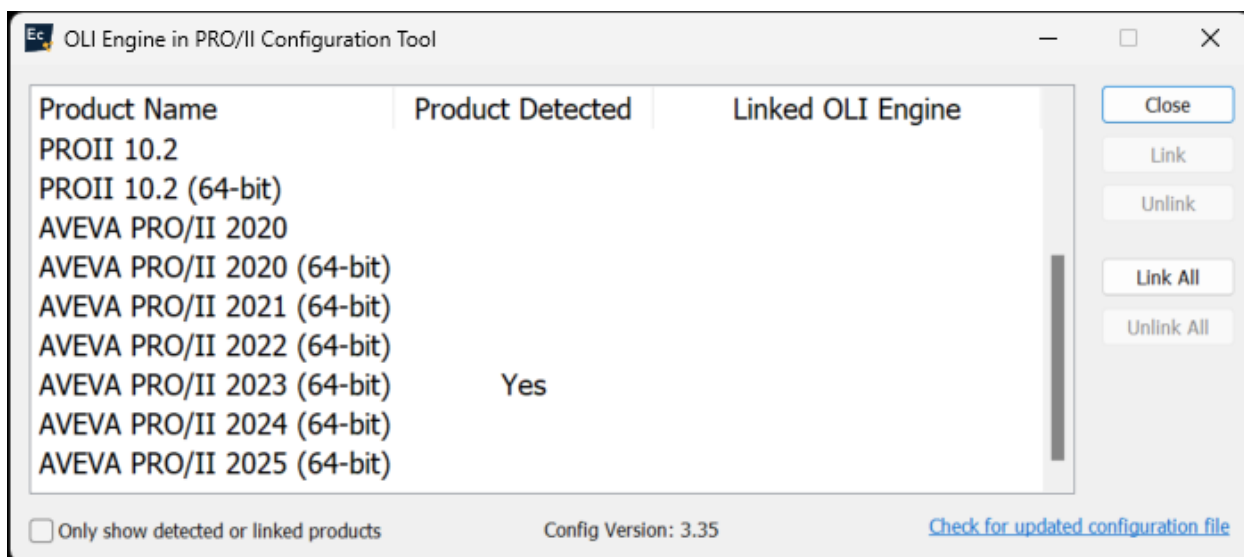


Configure PRO/II™:

- If no PRO/II products are displayed, uncheck the "Only show detected or linked products" box.
- This action will reveal all known PRO/II versions. For our example, we're selecting PRO/II 10.2.



This will display a list of known PRO/II products.

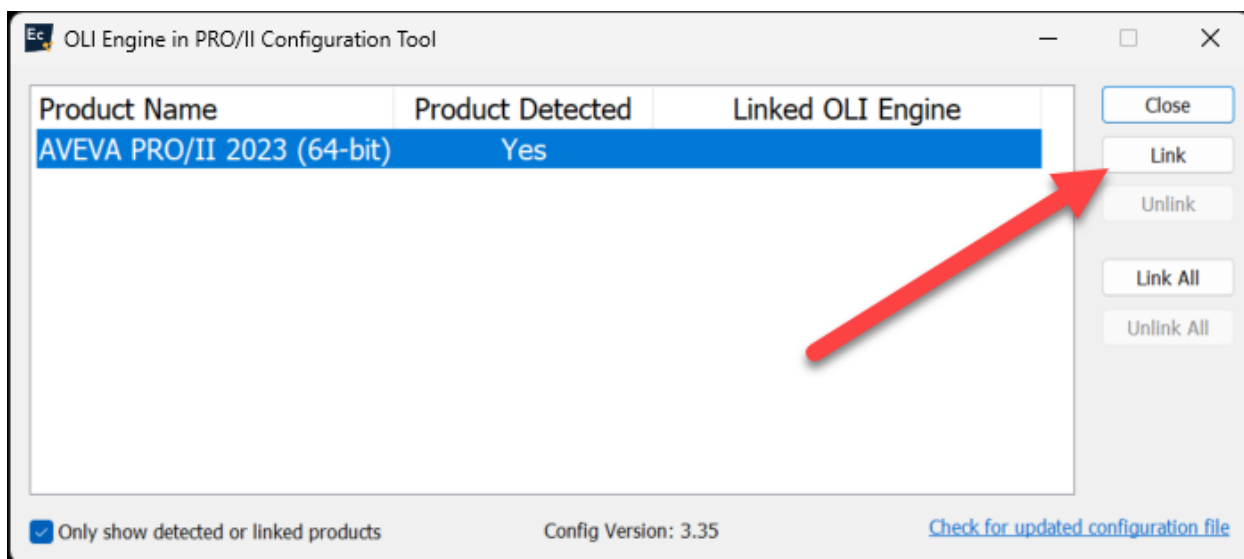


OLI does support older versions of PRO/II. If you have such an older version, please contact OLI via our [support portal](https://support.olisystems.com) at support.olisystems.com

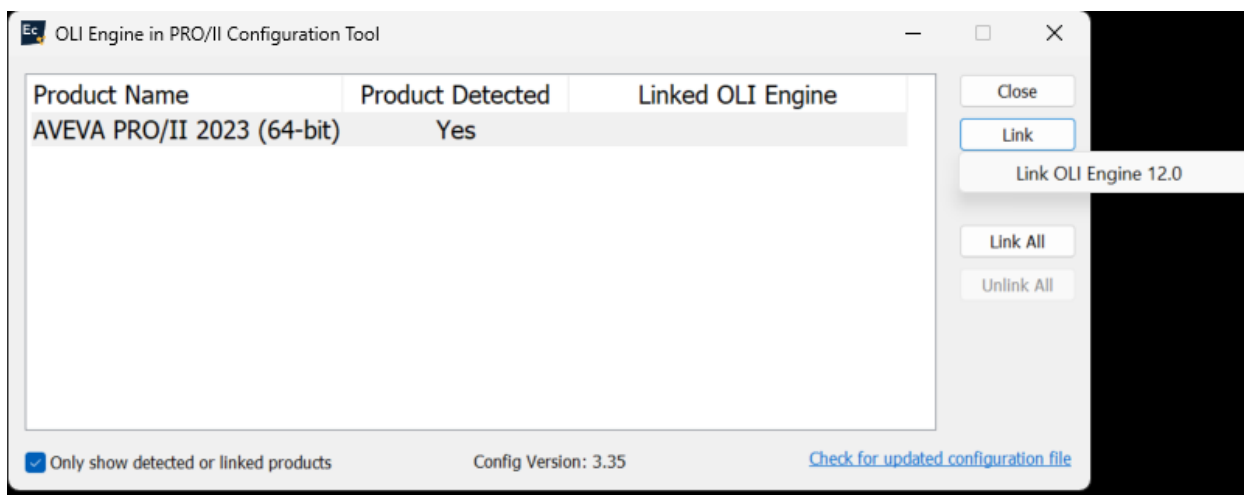
For our example, we have PRO/II 2023 installed.

Check the **Only show detected or linked products** box to reduce the number of options.

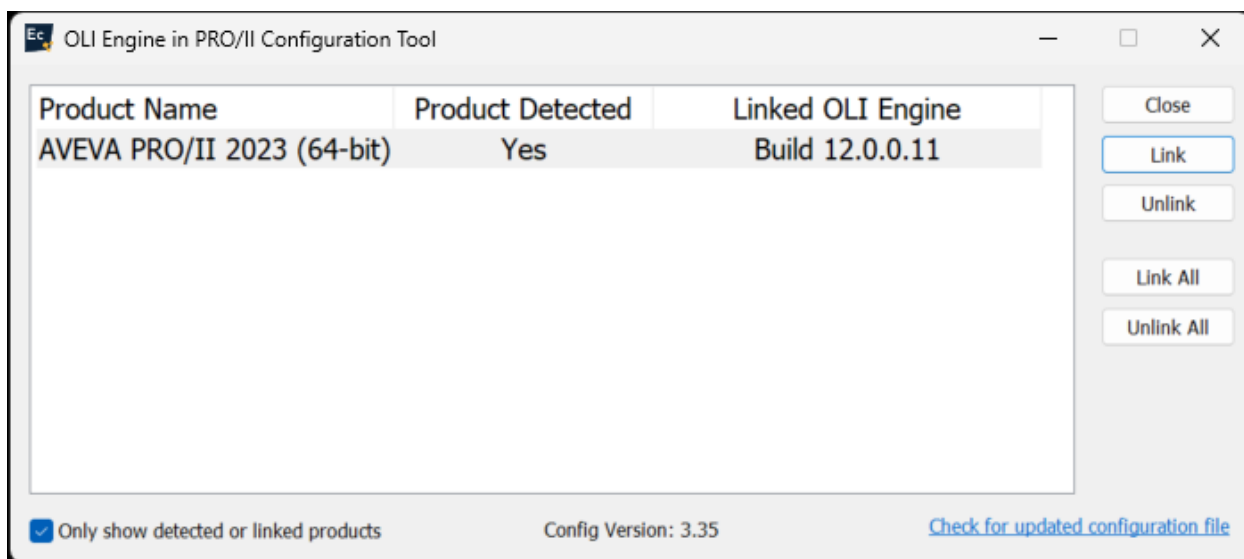
Please select that line and then click the **Link** button.



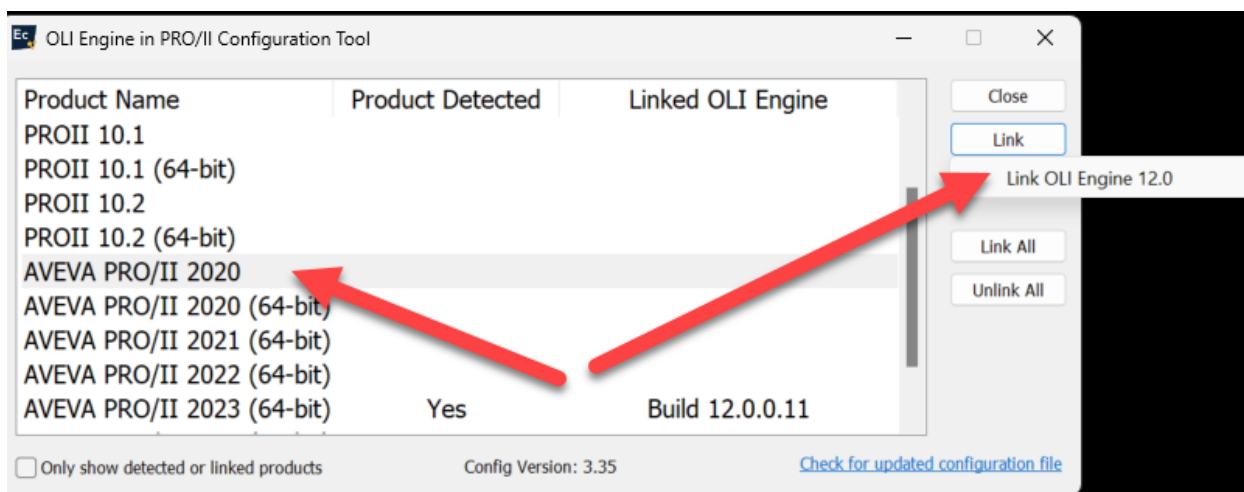
Click the version you wish to link. In this example, we only have one version of the OLI Engine available.



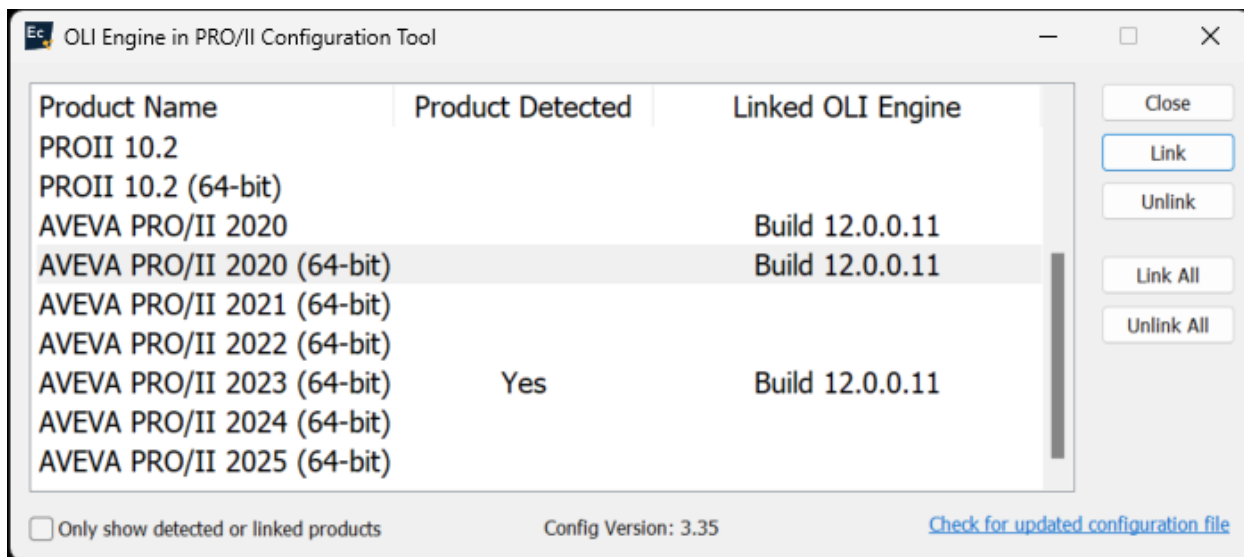
This shows that we have linked version 12.0 of the OLI Engine to the detected PRO/II version on this computer.



You can also link an older version of PRO/II.



Click the **Link** button to link this version. Link to the desired version.



(Note: There are two simultaneously installed versions of PRO/II. One is a full 64-bit version and a pseudo 32-bit version. We will link to both. The user will not see any differences in behavior)

Here is the linked version. Click the Close button when you're done.

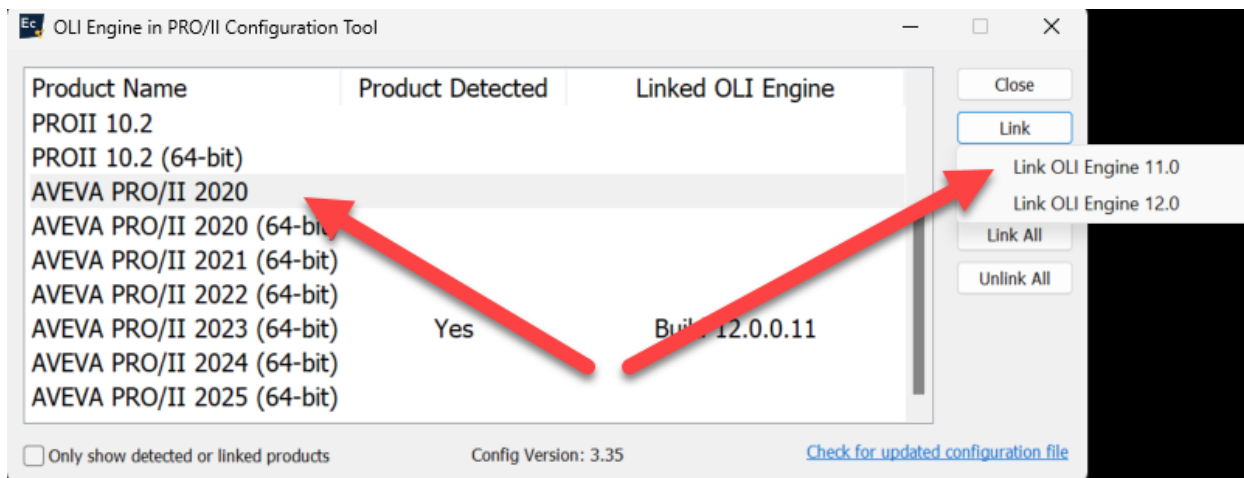
Scenario 2: Installing OLI Engine with Previous Versions

Open the Configuration Tool:

Start the configuration tool as above.

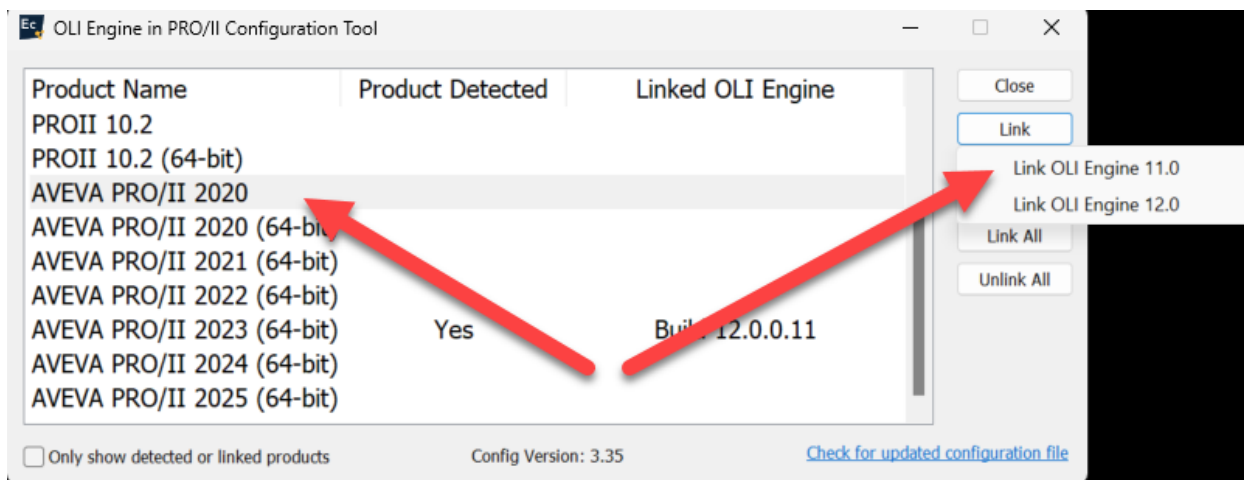
- As before, access the OLI Engine in PRO/II Config Tool from the Start Menu.
- Accept any prompts to allow changes.

We have previously installed the OLI Engine 11.0 with earlier products.



Choose the OLI Engine Version:

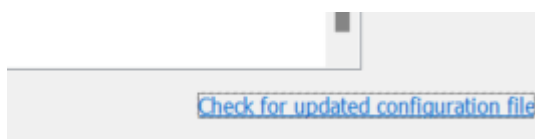
- With multiple OLI Engine versions installed, select the desired version (e.g., OLI Engine V12.0).
- Click "Link" to apply the new engine to the selected PRO/II version.



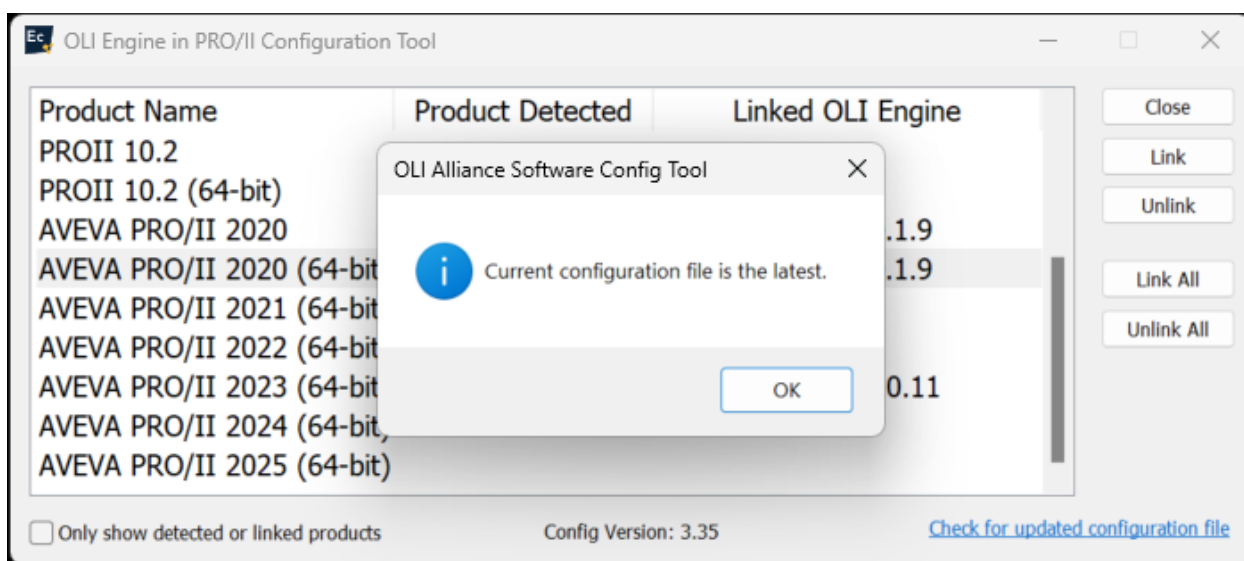
- Click "Close" once the linking is complete.

Keeping Your Configuration Up-to-Date

To ensure your setup remains current, you can check for updated configuration files. By clicking the **Check for updated configuration file** link, the tool will poll the OLI Download Website for any new versions, ensuring compatibility with future releases of PRO/II.



Here we have the most recent configuration file.



For further assistance or support, please visit our [support portal](#).

Trademark Notice:

AVEVA™ and PRO/II™ are trademarks or registered trademarks of AVEVA Group Limited and its subsidiaries. All other trademarks mentioned herein are the property of their respective owners.