



Configuring the
OLI Engine for Aspen HYSYS®



think simulation



getting the
chemistry right

Introduction to OLI Engine for Aspen HYSYS®

© 1997-2025 OLI Systems, Inc.

The enclosed materials are provided to the lessees, selected individuals and agents of OLI Systems, Inc. The material may not be duplicated or otherwise provided to any entity without the expressed permission of OLI Systems, Inc.

OLI Engine for Aspen HYSYS®

Contact Information

If you need to contact Support, you can submit an online request via OLI Support Center:
<https://support.olisystems.com>

Other useful links and resources are:

Product Downloads: <http://downloads.olisystems.com/>

Support Center: <https://support.olisystems.com/>

Alliance Configuration Guides: <https://support.olisystems.com/hc/en-us/sections/44539646996115-Alliance-Product-Configuration-Guides>

OLI Engine in Aspen HYSYS®: <https://support.olisystems.com/hc/en-us/sections/32157284149907-OLI-Engine-in-Aspen-HYSYS>

Disclaimer

This manual was produced using the OLI Engine for Aspen HYSYS® 14.5

As time progresses, new data and refinements to existing data sets can result in values that you obtain being slightly different than what is presented in this manual. This is natural progress and cannot be avoided. When large systematic changes to the software occur, this manual will be updated.

Trademarks

Aspen and Aspen HYSYS are trademarks of Aspen Technology, Cambridge, Massachusetts.

OLI, OLI Systems and the “OLI Engine 12.5 for Aspen HYSYS” are trademarks of OLI Systems, Inc. Parsippany, New Jersey, USA

Table of Contents

DISCLAIMER.....	2
TRADEMARKS.....	2
TABLE OF CONTENTS.....	3
OVERVIEW.....	4
Simplifying the Installation of OLI Engine for Aspen HYSYS®.....	4
Typical Installation Scenario.....	5
Scenario 1: Installing OLI Engine Without Previous Versions.....	5
Open the Configuration Tool:	5
Launch the Tool:.....	5
Configure Aspen HYSYS®:.....	6
Scenario 2: Installing OLI Engine with Previous Versions.....	8
Open the Configuration Tool:	9
Select Aspen HYSYS® Versions:	9
Choose the OLI Engine Version:.....	10
Keeping Your Configuration Up-to-Date.....	10
Trademark Notice:.....	11

Overview

At OLI, our goal is to simplify complex processes for non-IT professionals, making advanced software tools accessible and easy to use. This manual aims to guide users through the seamless integration of the OLI Electrolyte Model within Aspen HYSYS using our automated configuration tool. This tool simplifies the traditionally complex task of configuring system registry links, ensuring a smooth connection between the two products.

You can also click [here](#) for a quick video on how to link the OLI Engine for Aspen HYSYS.

The OLI Engine for Aspen HYSYS® interface greatly enhances the Aspen HYSYS® capability to model electrolyte systems. A rigorous and self-consistent thermodynamic framework is employed to tame the mathematically stiff equations commonly found in electrolyte systems. Also, a database of over 10,000 components is available.

Simplifying the Installation of OLI Engine for Aspen HYSYS®

For non-IT professionals, the technical aspects of integrating complex software systems can seem daunting. At OLI, we strive to simplify these processes, making advanced tools accessible and user-friendly. One such example is the integration of the OLI Electrolyte Model within Aspen HYSYS, a task traditionally complex due to the need for configuring system registry links. To address this, we've developed an intuitive configuration tool that automates the process, ensuring seamless connectivity between the two products.

Typical Installation Scenario

In a typical setup, users first install the Aspen HYSYS software, followed by the OLI Engine. Ideally, this sequence should establish the necessary links automatically, allowing the OLI Electrolyte Model to function within Aspen HYSYS without additional intervention. However, users may encounter two main scenarios:

1. **Single Installation:** Where a single version of Aspen HYSYS is installed, and the OLI Engine is either being added or upgraded.
2. **Multiple Installations:** Where multiple versions of Aspen HYSYS and the OLI Engine exist on the same system.

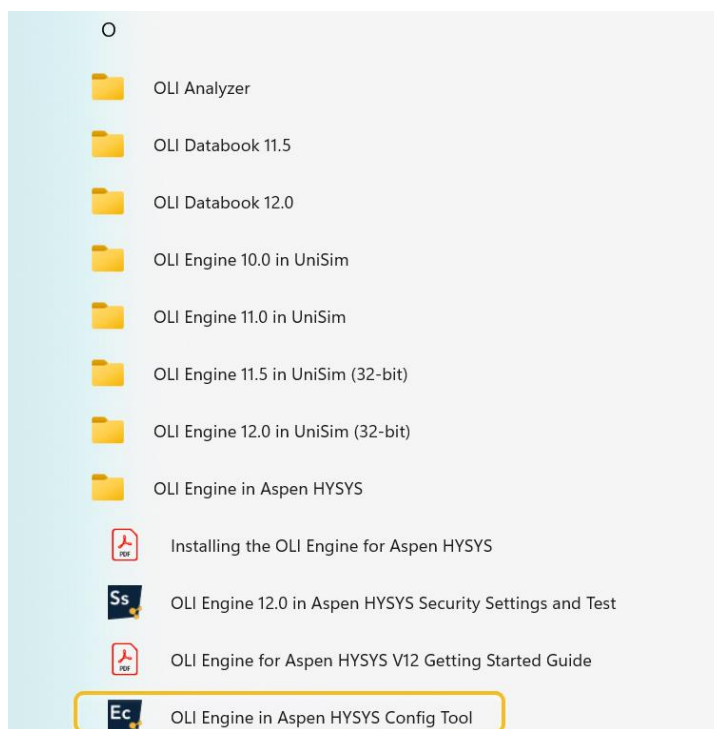
Our guide covers both scenarios to ensure you can handle either situation with ease.

Scenario 1: Installing OLI Engine Without Previous Versions

For systems without previous OLI installations, follow these steps:

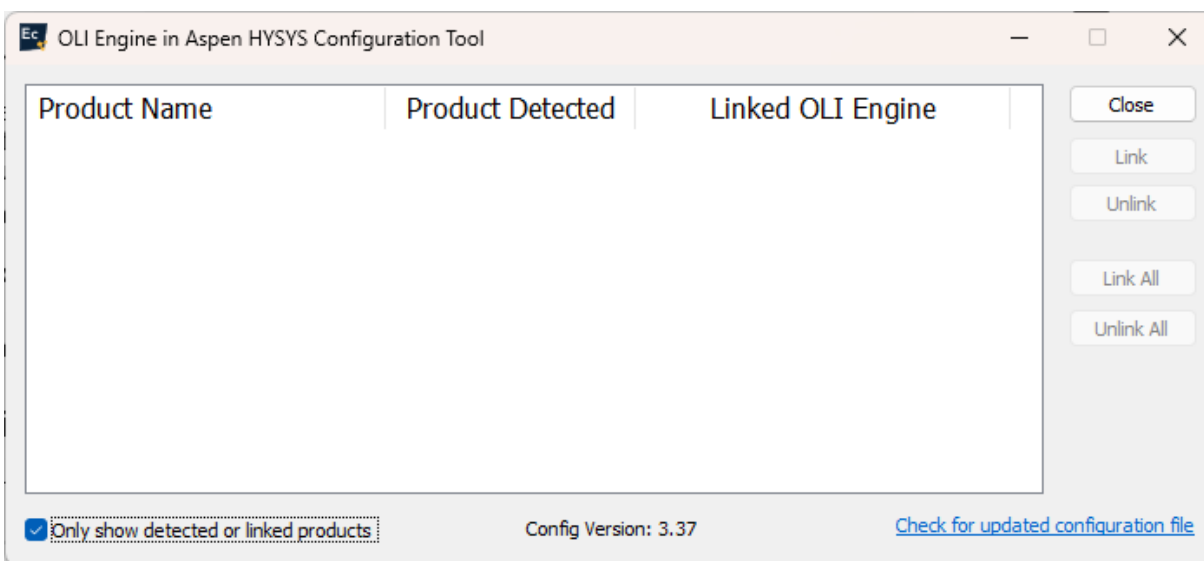
Open the Configuration Tool:

- Navigate to the O folder in the Start Menu.
- Navigate to the OLI Engine in Aspen HYSYS folder
- Select the OLI Engine for Aspen HYSYS Config Tool.



Launch the Tool:

- If prompted by the operating system to allow changes, click "YES".

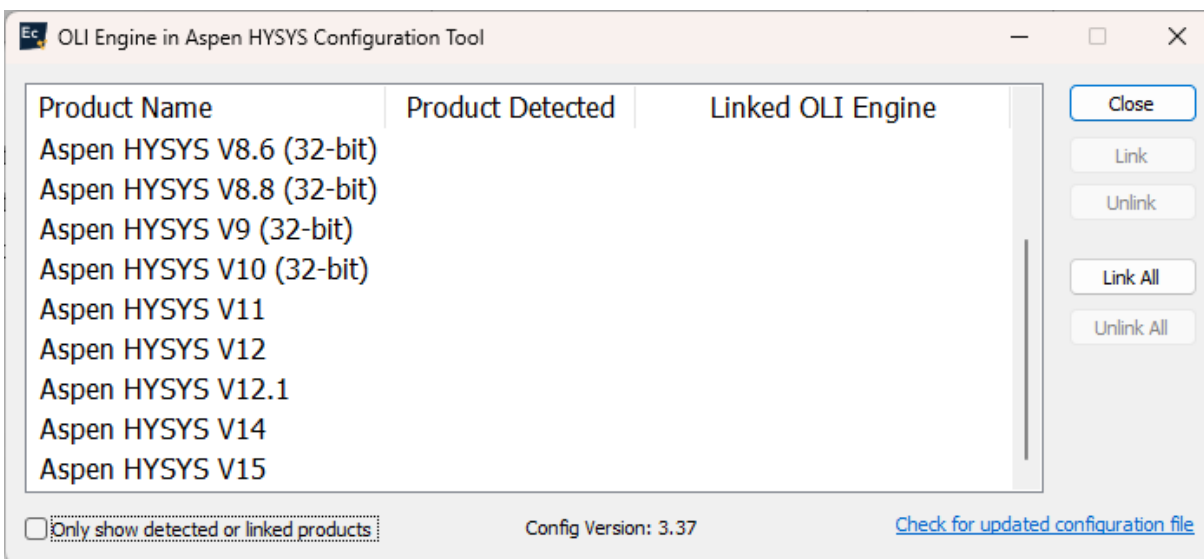


Configure Aspen HYSYS®:

- If no Aspen HYSYS products are displayed, uncheck the "Only show detected or linked products" box.
- This action will reveal all known Aspen HYSYS versions. For our example, select Aspen HYSYS V14.

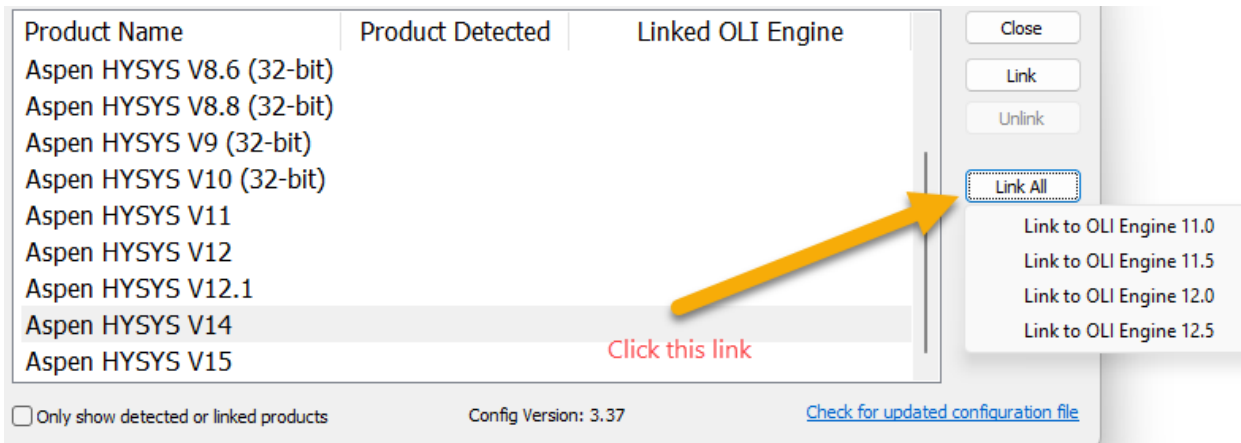


This will display a list of known Aspen HYSYS products.

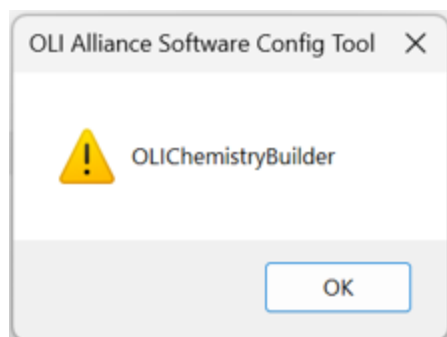


OLI does support older versions of Aspen HYSYS. If you have such an older version, please contact OLI via our support portal at <https://support.olisystems.com>

For our example, we have Aspen HYSYS V14 installed. Please select that line and then click the **Link All** button.

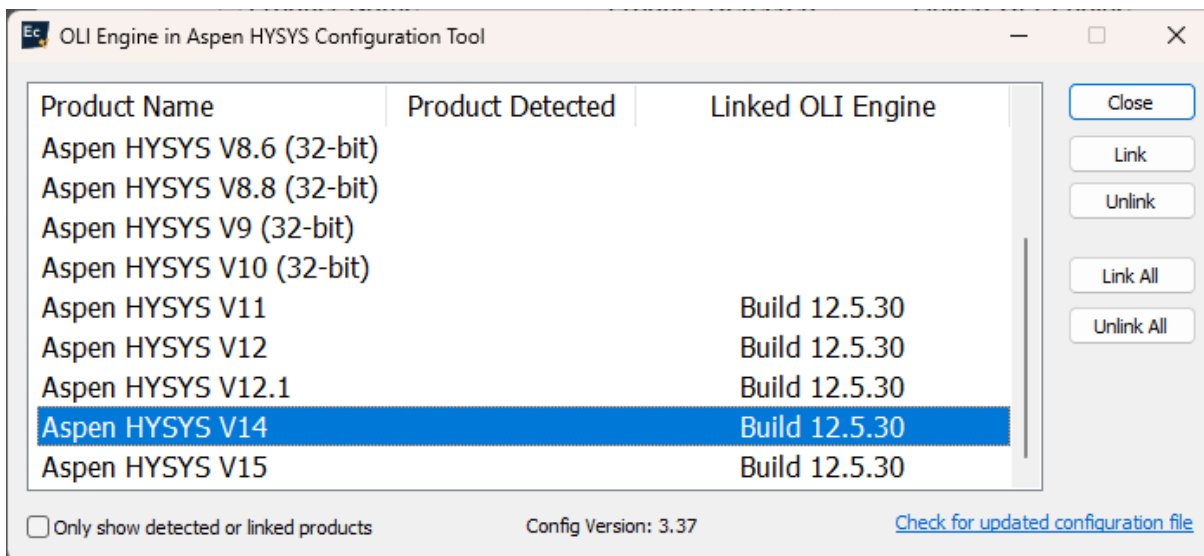


A pop-up may display.

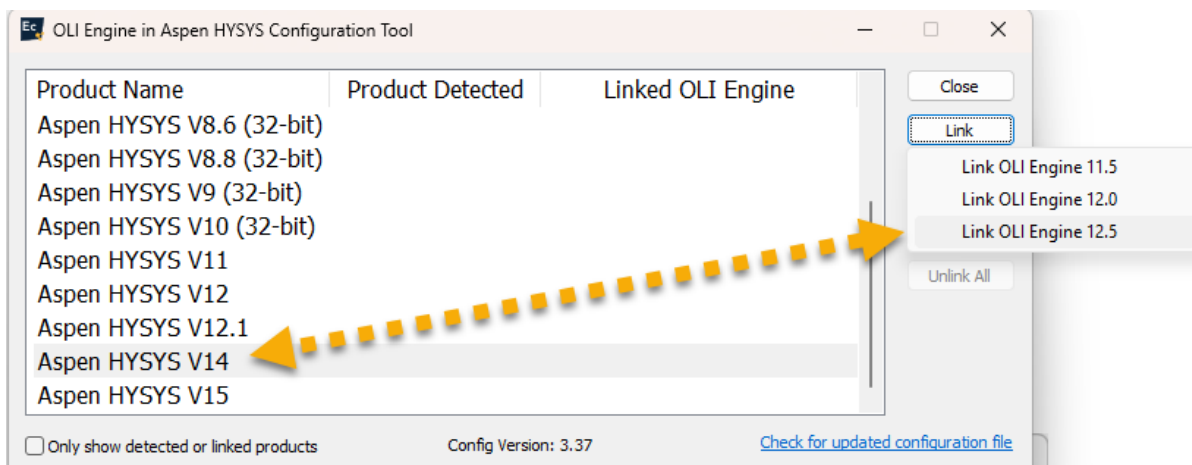


This is for Aspen REFSYS. Since this example does not have a license to Aspen REFSYS, the pop-up is displayed. Click **OK**

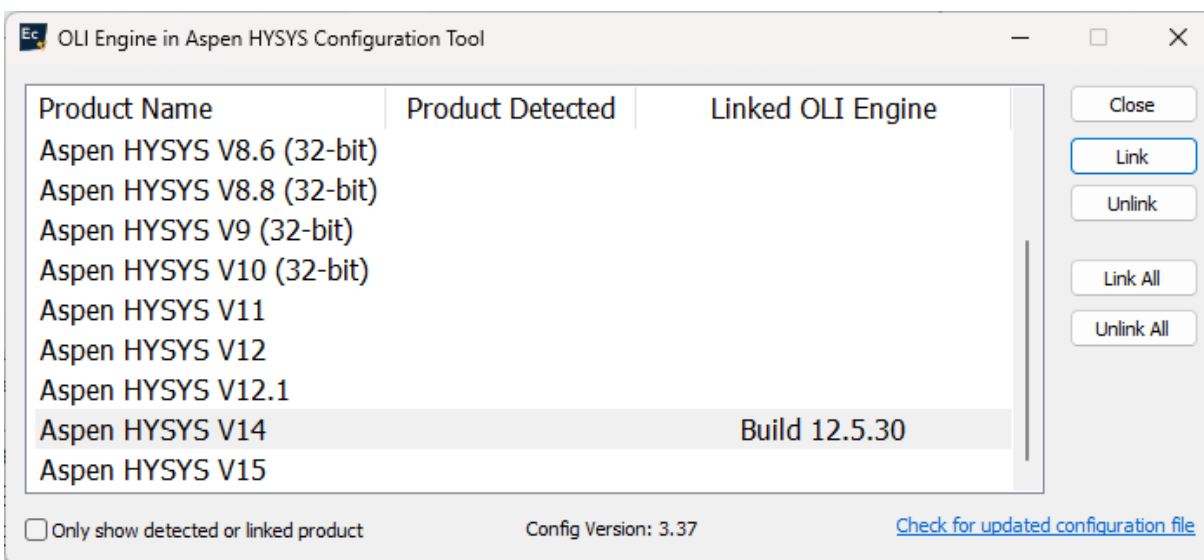
This shows that we have linked version 12.5.30 of the OLI Engine to all the detected Aspen HYSYS versions on this computer.



You may also install it for a single version of Aspen HYSYS. In the image below, we are linking only to Aspen HYSYS V14.



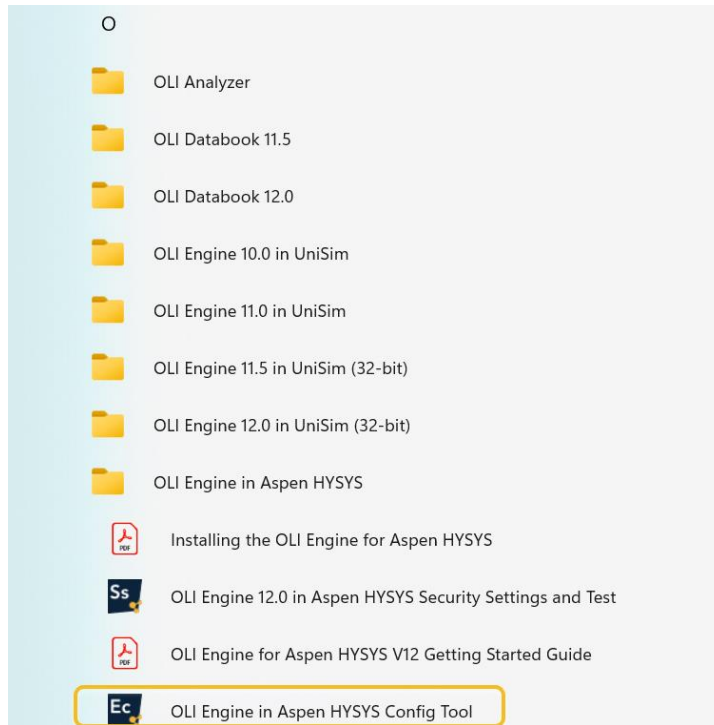
Click the **Link** button to link this version. Link to the desired version.



Here is the linked version. Click the Close button when you're done.

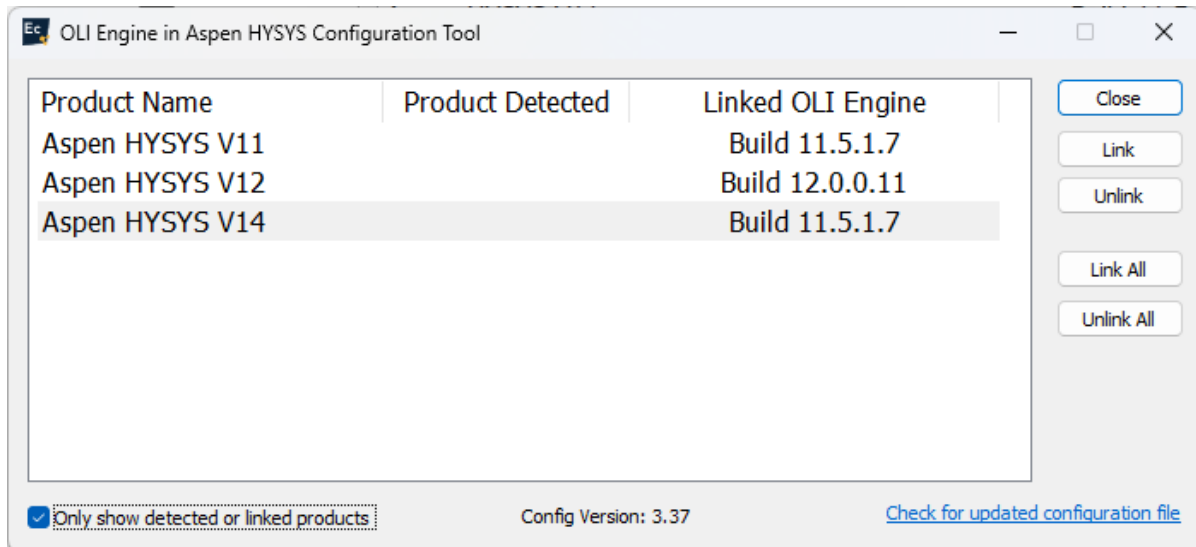
Scenario 2: Installing OLI Engine with Previous Versions

If multiple versions of Aspen HYSYS and the OLI Engine are installed, follow these steps:



Open the Configuration Tool:

- As before, access the OLI Engine in Aspen HYSYS Config Tool from the Start Menu.
- Accept any prompts to allow changes.



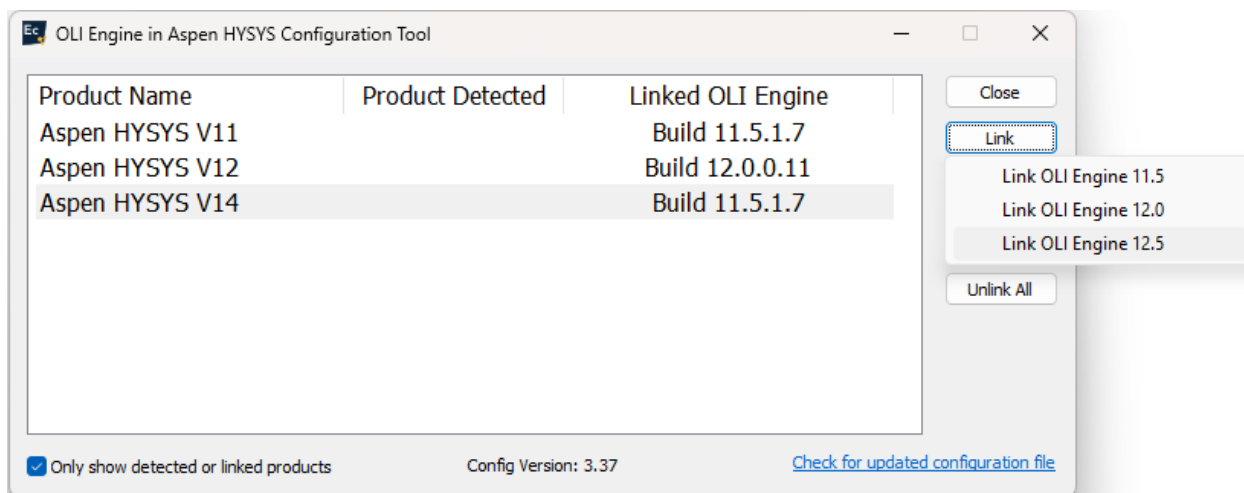
Select Aspen HYSYS® Versions:

- The tool will display all installed versions of Aspen HYSYS. For this example, select Aspen HYSYS V14.

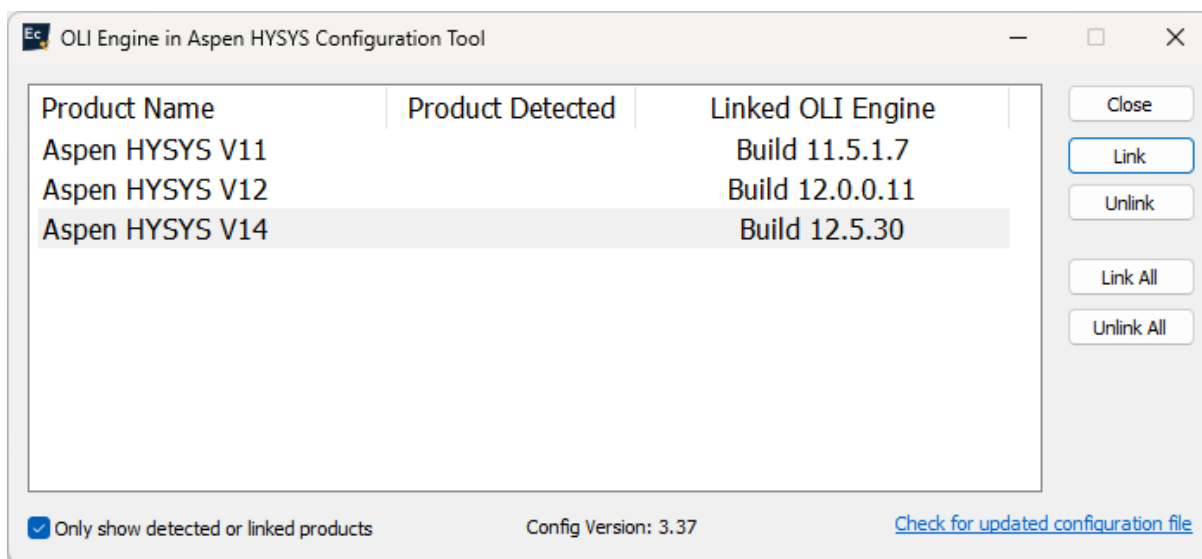
This window shows you the installed Aspen HYSYS programs. We have previously installed the OLI Engine 11.5.1.7 and 12.0.0.11 with these products.

Choose the OLI Engine Version:

- With multiple OLI Engine versions installed, select the desired version (e.g., OLI Engine V12.5).
- Click "Link" to apply the new engine to the selected Aspen HYSYS version.
- Click "Close" once the linking is complete.

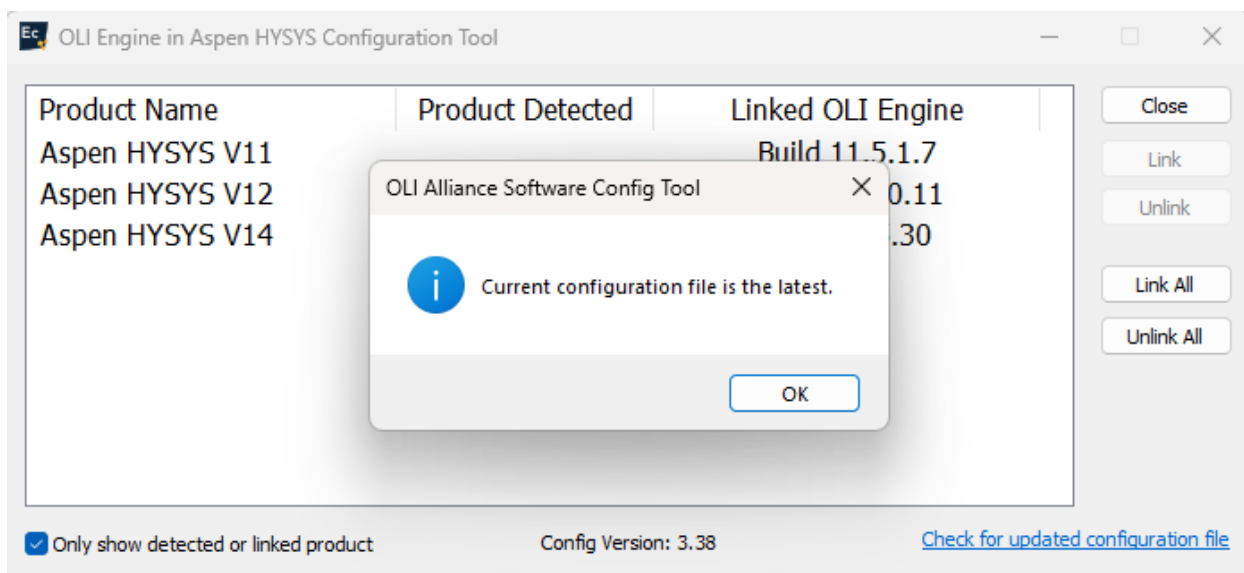


- Click "Close" once the linking is complete.



Keeping Your Configuration Up-to-Date

To ensure your setup remains current, you can check for updated configuration files. By clicking the **Check for updated configuration file** link, the tool will poll the OLI Download Website for any new versions, ensuring compatibility with future releases of Aspen HYSYS.



For further assistance or support, please visit our [support portal](#).

Trademark Notice:

Aspen HYSYS® is a trademark of Aspen Technologies, Cambridge, Massachusetts, USA.