



OLI Tips #76

How to turn off the run-time beep in ESP?

Overview.....	1
Assumptions.....	1
Procedure	1

Overview

The run-time beep, present in ESP since version 1.0, can be an annoying noise. Since it is driven by the PC Speaker and not via the sound card, there are very few options to modify the sound.

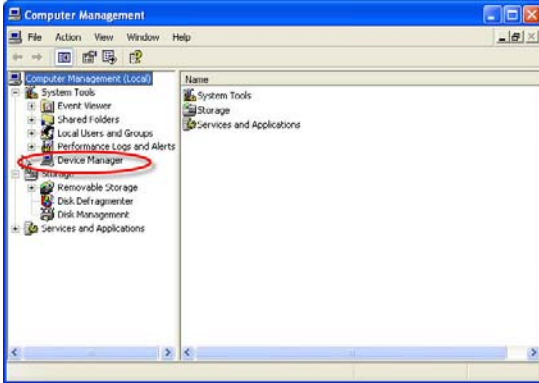
In fact, short of physically disabling the speaker, you can only turn the speaker on or off. This means that the POST (power-on-self-test) beep will also not be turned on. This is usually a minor issue.

Assumptions

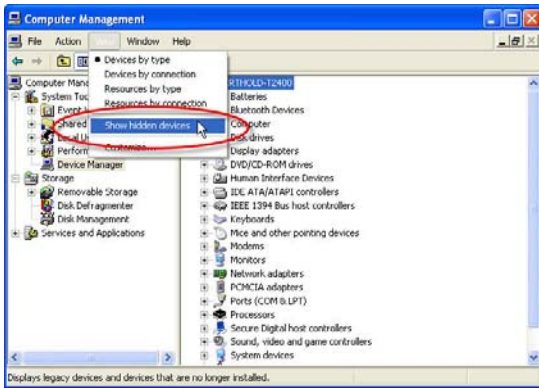
1. You must be using Microsoft Windows XP or later
2. You must have sufficient privilege to make changes to your system registry files.

Procedure

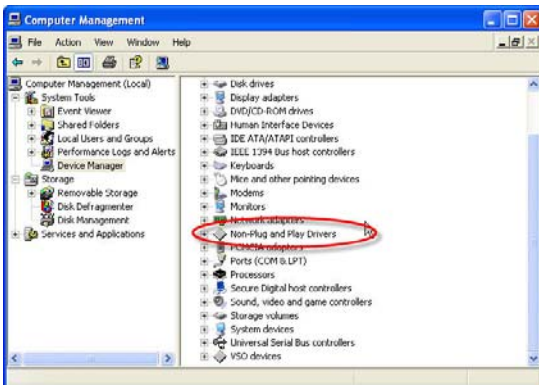
1. Locate the *My Computer* icon on your desktop
2. Right-click the *My Computer* icon.
3. Select the *Manage* option



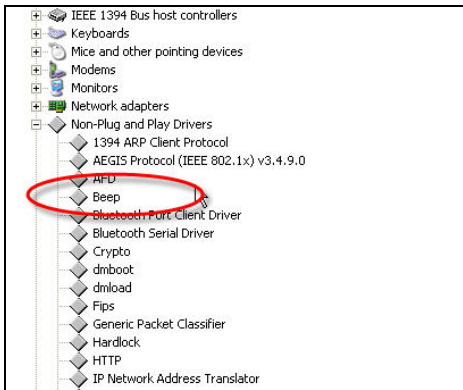
4. Select **View** from menu and select **Show Hidden Devices**



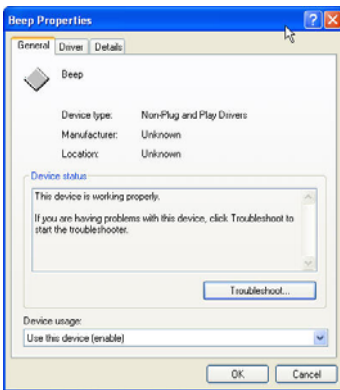
5. Scroll the right-hand window and expand **Non-Plug and Play Drivers**



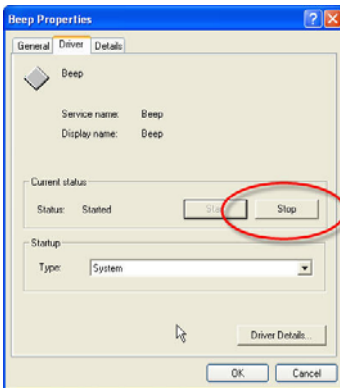
6. Double-Click the item **Beep**



7. Click on the **Driver** Tab



8. Click the **Stop** button.



9. Click the OK button.

The PC speaker has now been disabled. To re-enable the speaker, repeat these steps but start the driver instead of stopping it.