

OLI Tips #49

Importing streams from Hysys™ and Aspen Plus™ and into the OLI/StreamAnalyzers™¹

Importing from HYSYS™

In this example we will import a stream from an exiting Hysys file. The file extension for Hysys must be of the “hsc” type.

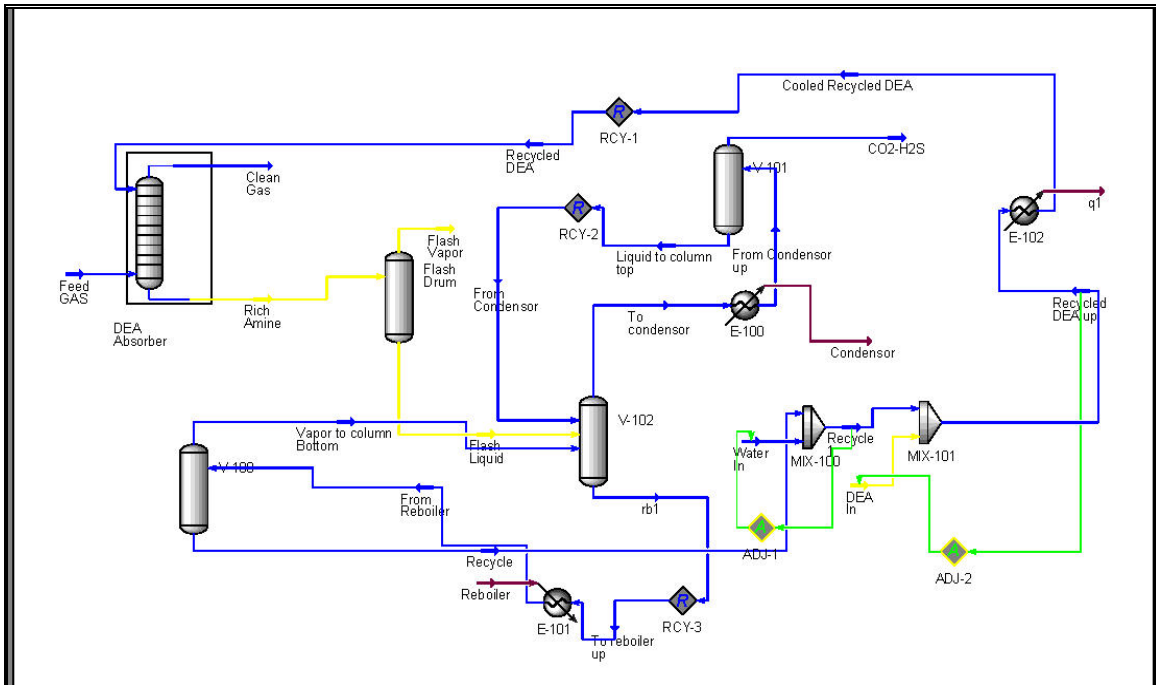


Figure 1 Hysys Process Flow Diagram

There are a few requirements to import from Hysys .

- 1) Importing is only supported in OLI/Analyzers 1.3.36 or later
- 2) You must have Hysys 3.2 or later installed on you computer
- 3) You must have a valid license key or hardware device for Hysys attached to your computer.

¹ Aspen Plus™ and Hysys™ are trademarks of Aspen Technology, Inc. Cambridge, Massachusetts

To begin the import process, start an OLI/Analyzer program. In our example we will be using the OLI/CorrosionAnalyzer although the steps for importing are the same in all OLI/Analyzer products.

Start the OLI product.

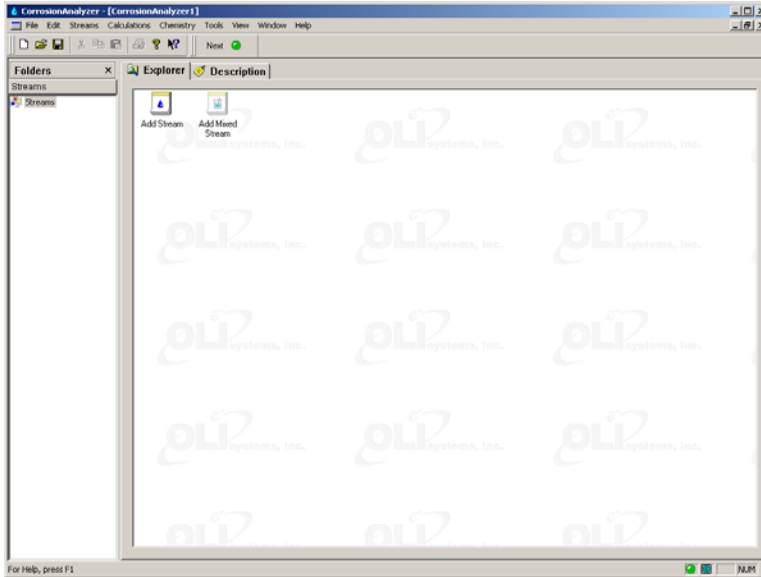


Figure 2 OLI/CorrosionAnalyzer Main Window.

Select *File* from the Menu Line.

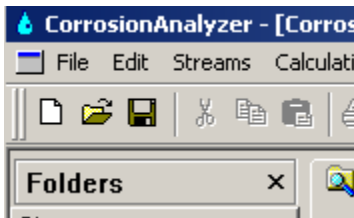


Figure 3 Select File

This will display a file menu system.

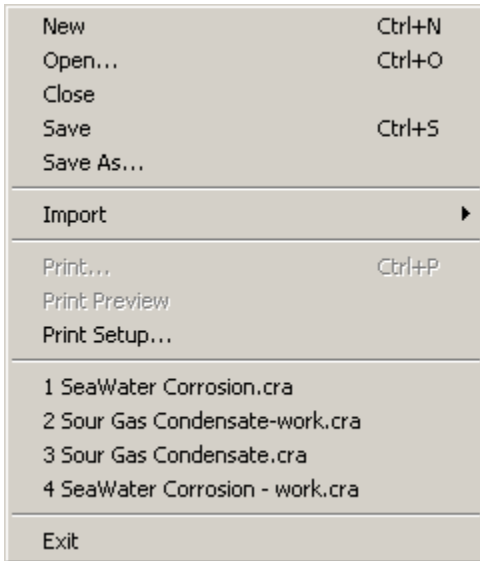


Figure 4 Select Import

Select *Import*

This will display a fly-out menu

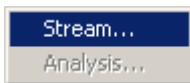


Figure 5 Select Stream

Select *Stream...*

This will display a standard Windows™ File/Open dialog. Switch the folder that contains the file with the stream of interest.

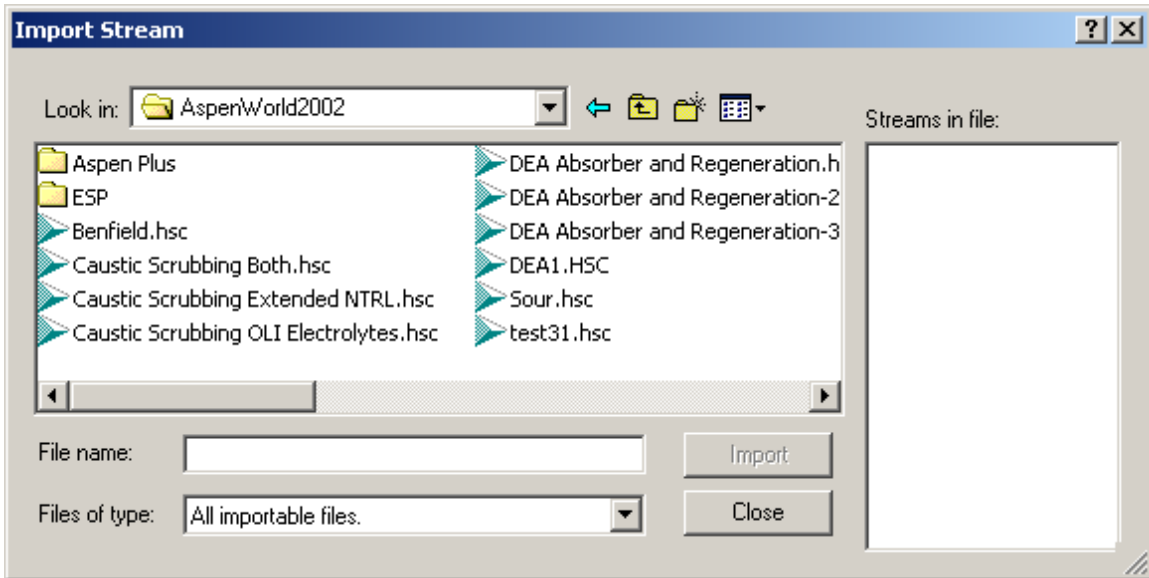


Figure 6 Available files for import in this folder.

Click on the appropriate file name.

The import process will start and load Hysys. You may get the following warning. This is a common message which is displayed when you have too many processes running.

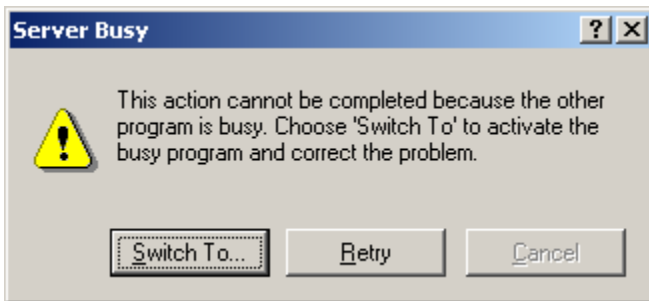


Figure 7 Server Busy

Click the *Switch To...* button

As Hysys begins to load, you may get additional informational messages.

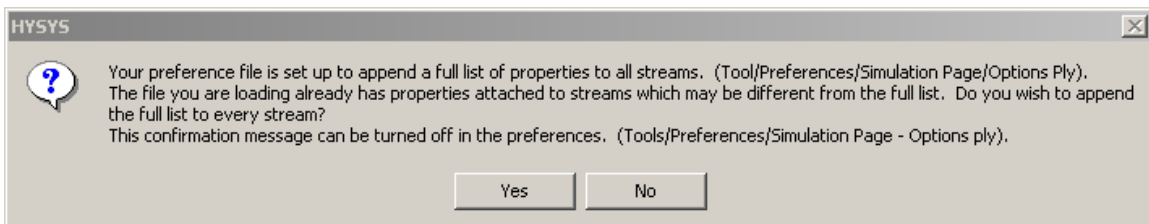


Figure 8 Preference list informational warning.

Click *Yes*.

After loading Hysys for the selected file, a list of available streams will be displayed.

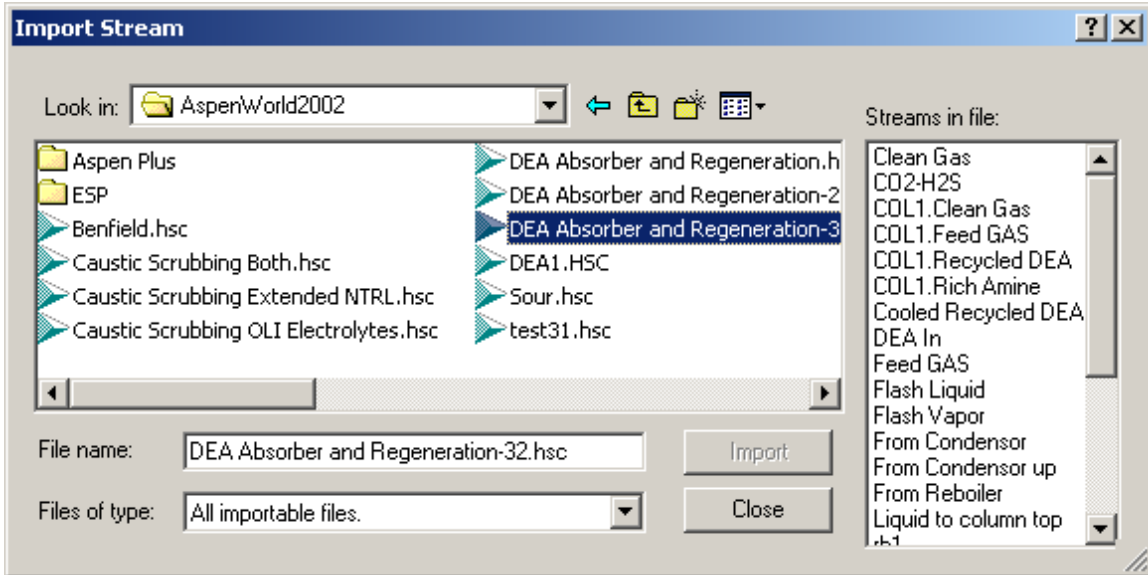


Figure 9 Available streams.

Click on the desired stream in the *Streams in file* box.

We have selected the stream “CO2-H2S”

Click the *Import* button

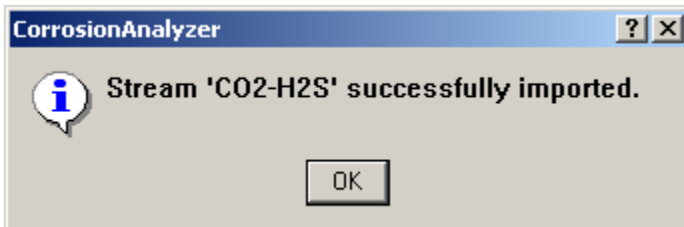


Figure 10 A message from the Analyzers indicating that the stream has been imported.

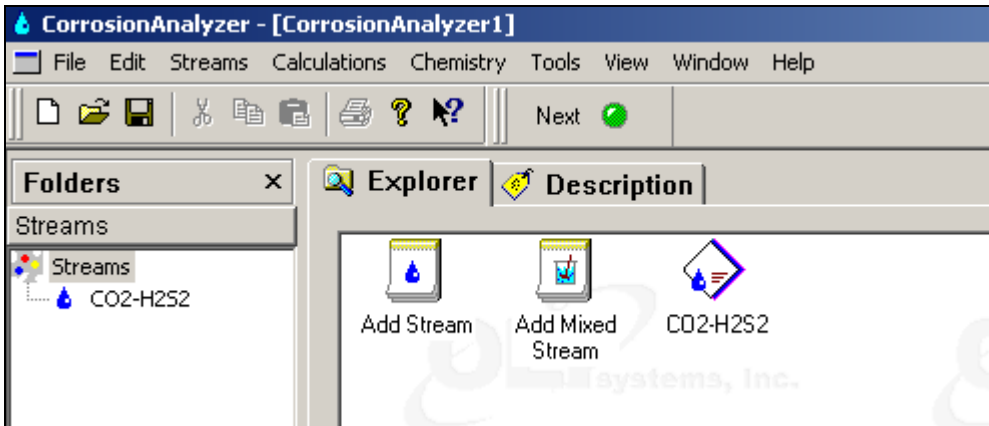


Figure 11 The imported stream is now ready for use.

Importing from Aspen Plus

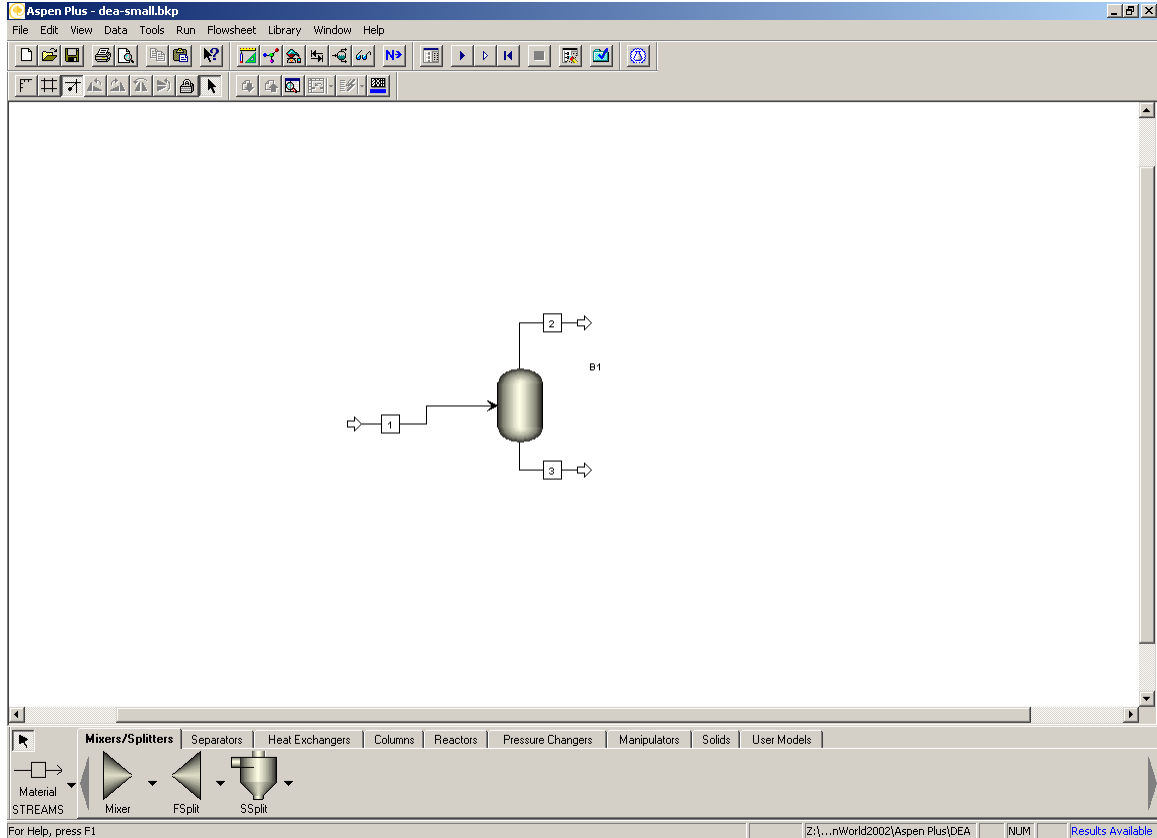


Figure 12 Aspen Plus 12.1 Model Manager

Importing from Aspen Plus™ is similar to importing from Hysys™. There are a few requirements prior to importing from Aspen Plus.

- 1) Only Aspen OLI files may be imported.
- 2) Aspen Plus™ must be installed on your computer
- 3) A valid OLI Chemistry Model must exist for the Aspen OLI case.
- 4) Two environmental variables must be set.²
 - a) ASPTOP must be set to
 - i) C:\Program Files\AspenTech\Aspen Plus 12.1\Engine
 - b) ASPTOOLKITPATH must be set to
 - i) C:\Program Files\AspenTech\APrSystem 12.1\Engine\Xeq
- 5) The PATH statement for your computer must have the ASPTOOLKITPATH environmental variable added
 - a) PATH must have ;%ASPENTOOLKITPATH% appended to the end of the path.
 - i) c:\Opt\Bin;%SystemRoot%\system32;%SystemRoot%;%SystemRoot%\System32\Wbem;C:\Program Files\Common Files\AspenTech Shared;%ASPENTOOLKITPATH%

² We will be assuming a default installation of Aspen 12.1

It is beyond the scope of this document to instruct the user on how to modify the environmental variables.

To begin the import, follow the steps outlined in Figures 2 - 5

Switch to the working folder. Both the BKP and DBS file should be in this folder.

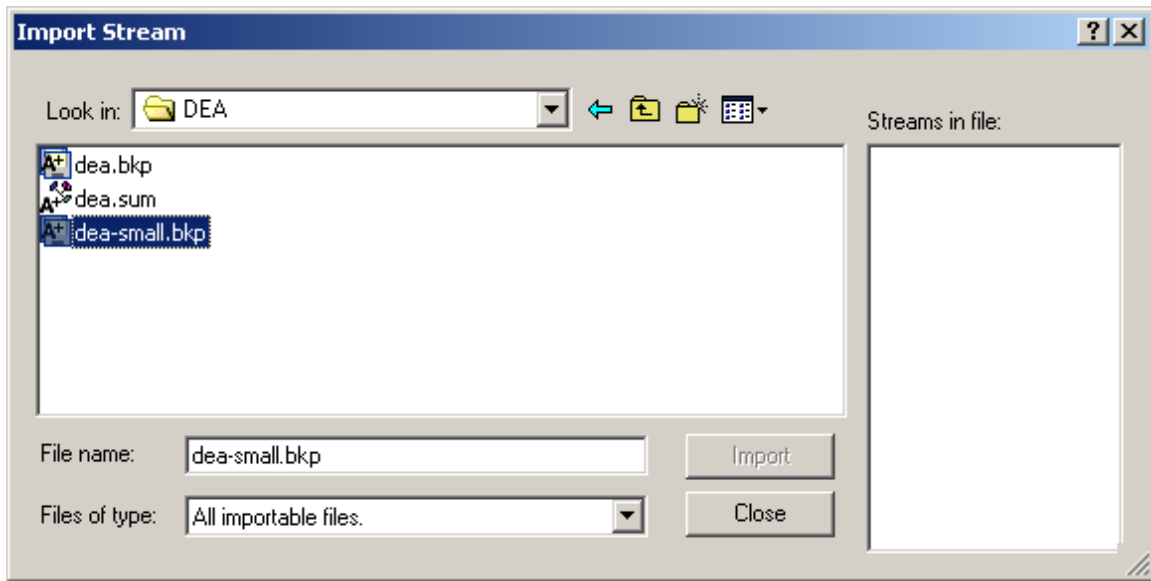


Figure 13 Locating BKP files

Select the desired BKP file.

It is necessary to have the OLI DBS file to start the import. This DBS file should be in the same folder and the BKP file.

Select the DBS file and click OPEN.

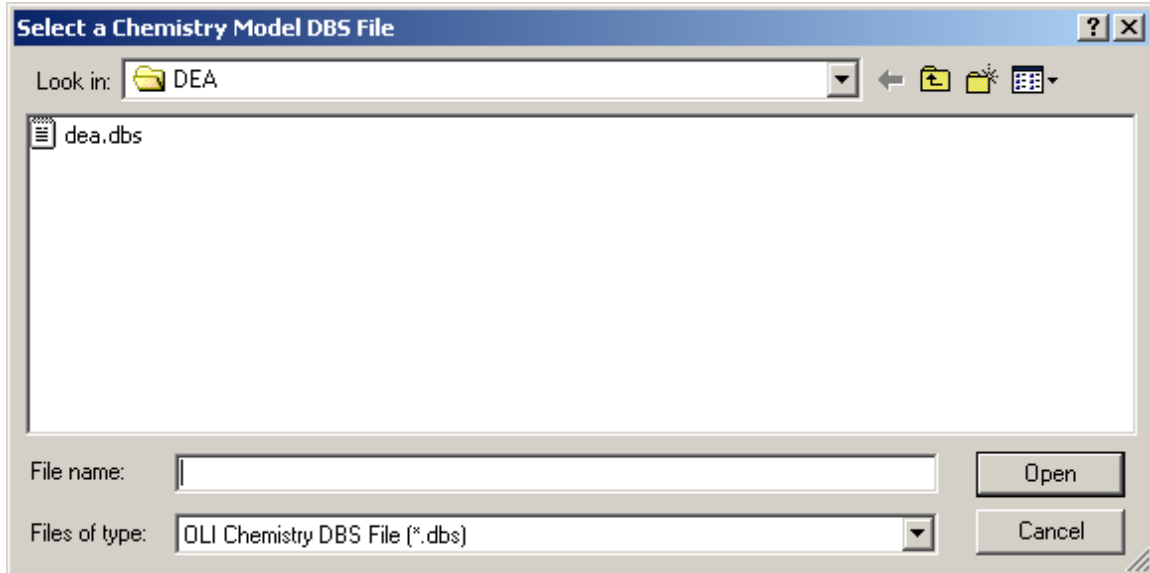


Figure 14 Selecting the DBS file

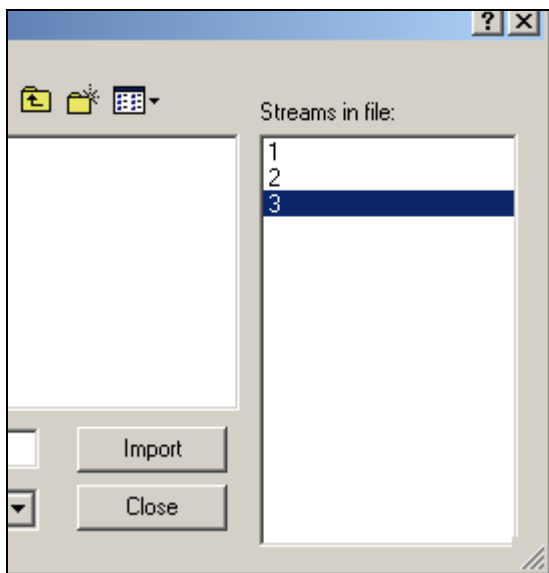


Figure 15 Available streams.

A list of available streams will be displayed.

Select the desired stream and click *Import*.

A dialog will appear that the stream was successfully imported.

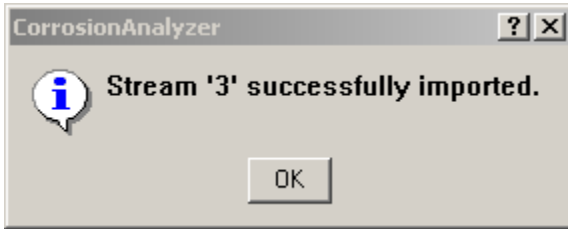


Figure 16 Good News!

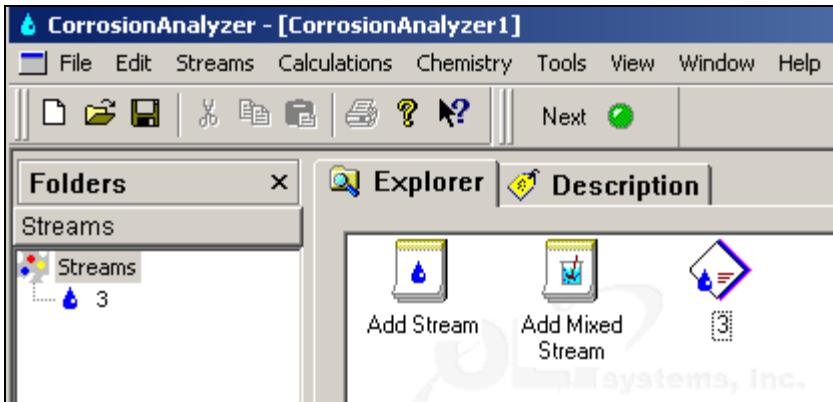


Figure 17 The imported Stream.

The stream is now available for use.