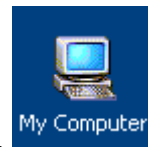
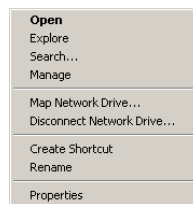


OLI Tips #37 Changing the temp file locations(Windows 2000/XP)

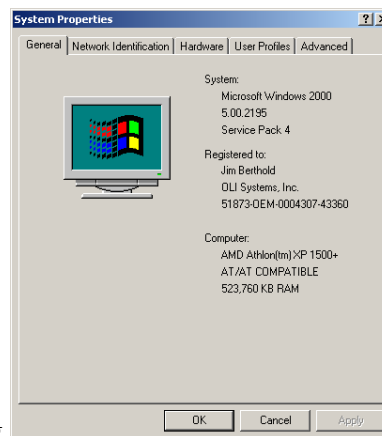
The OLI/Analyzers™ frequently require the writing of files to the temporary file space on your computer. Occasionally a users computer may have the location of the temp file space set to a path that is too long for the OLI software. The file location needs to be changed.



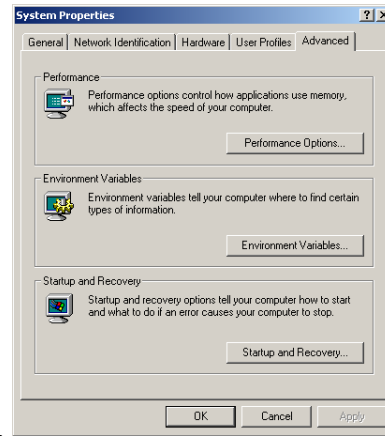
1. Right-click the **My computer** icon on your desktop.



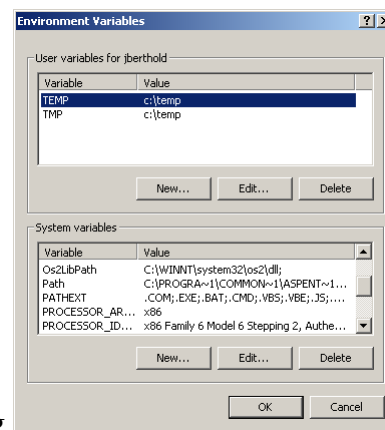
2. Select **Properties** from the menu.



3. Select the **Advanced Tab** from the dialog.

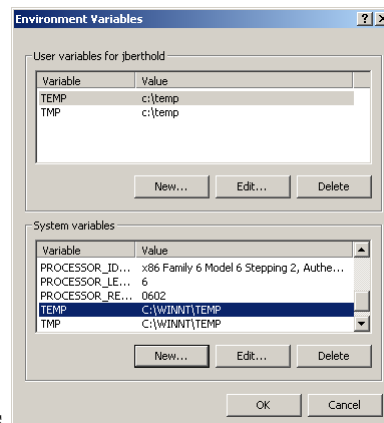
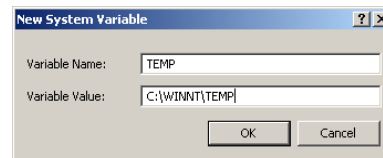


4. Select **Environmental Variables** from the dialog.



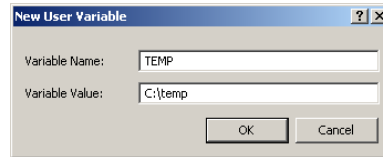
5. Select **New** from the **System Variables** dialog.

6. Enter the new variable name. Assuming you have a current folder **C:\WINNT\Temp** on your hard disk. Click the **OK** button when done.



7. Repeat the same step for the **User Variables**.

8. Assuming you have a folder on your hard drive **C:\Temp**, click the **New...** button and enter the values as indicated.



9. Click the **OK** button
10. Continue to click the **OK** button to leave the set up. Reboot if requested.