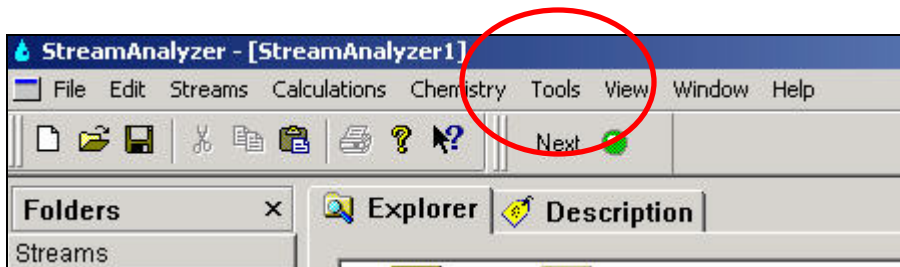


OLI Tips #30 Enabling Plug-Ins.

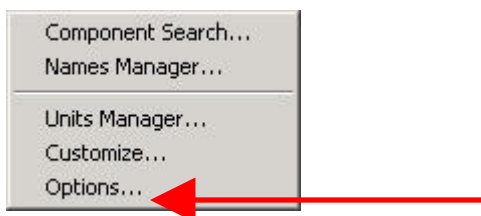
Each of the OLI/Analyzers™ is designed to work with each component. You can drag and drop objects from the StreamAnalyzer™ into the CorrosionAnalyzer™. Alternatively, if you have the appropriate licenses, you can activate the CorrosionAnalyzer™ and LabAnalyzer™ within the StreamAnalyzer™. The same is true for each of the analyzers. In this section we will activate the LabAnalyzer™ and the CorrosionAnalyzer™ inside the StreamAnalyzer™.

Start the OLI/StreamAnalyzer™

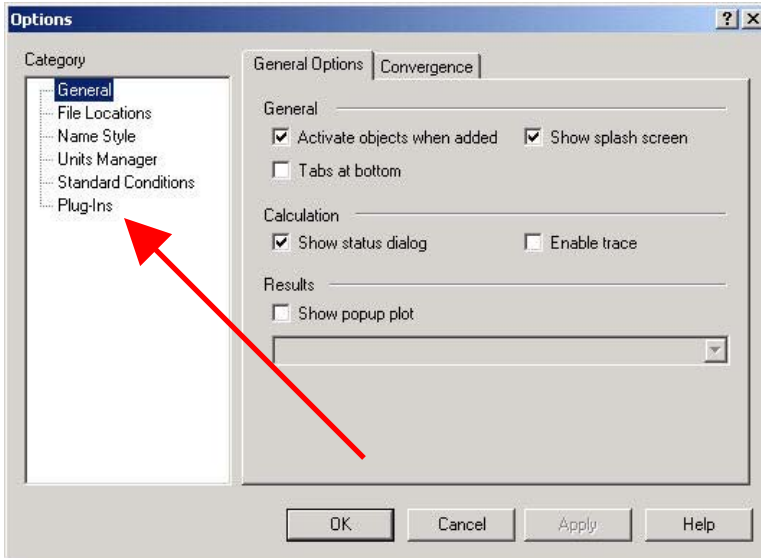
Locate the *Tools* menu item and select it.



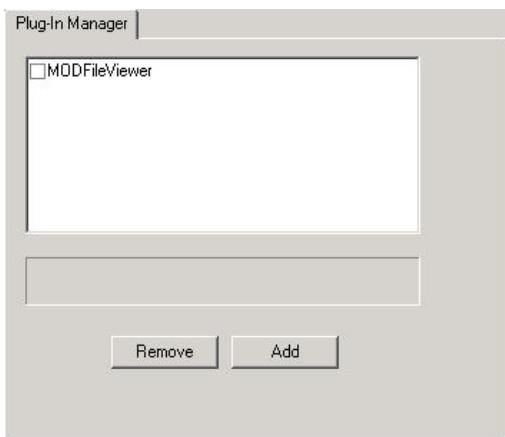
From the drop down menu select *Options...*



This will display the Options window.

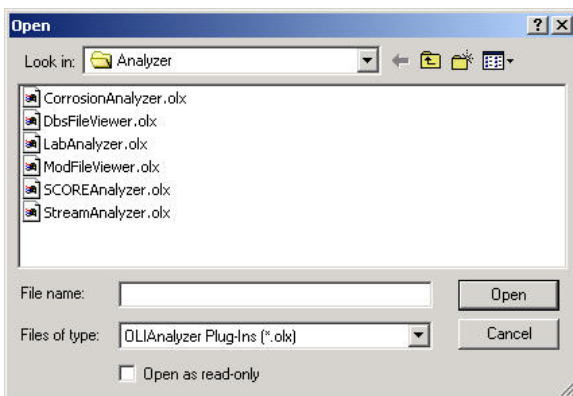


Click on Plug-Ins.



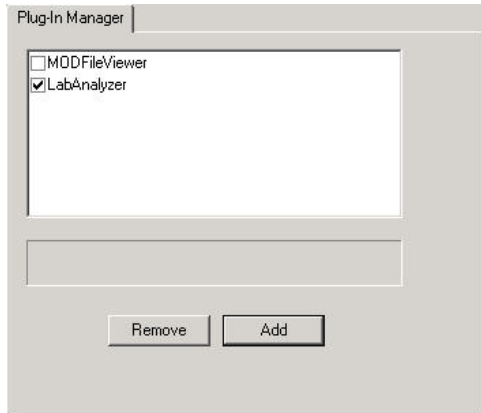
The currently installed set of plug-ins will be displayed. We can add more plug-ins.

Click the *Add* button

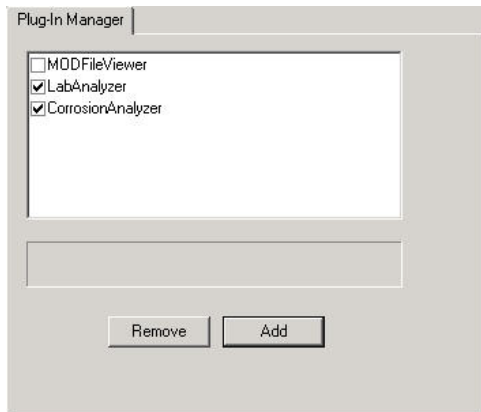


Plug-ins for the OLI/Analyzers™ all have the extension “OLX”.

To install the LabAnalyzer™, highlight LabAnalyzer.olx¹



The LabAnalyzer plug-in has been loaded and automatically activated. You can repeat this for the CorrosionAnalyzer.



Click the *OK* button.

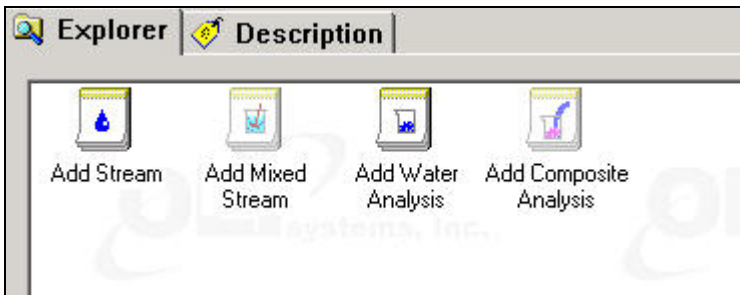
The plug-ins have now been loaded. The program needs to be shut down and restarted. Save your files if necessary.

When restarting the program, the plug-ins will be initialized

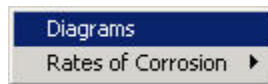
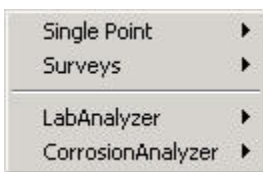
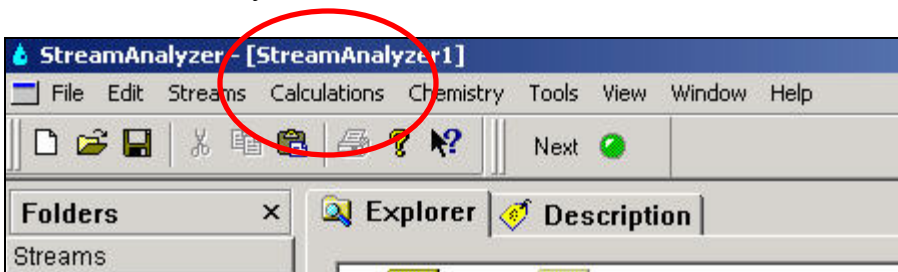
¹ The file extension may not be visible depending on your settings for File/Explorer.



The LabAnalyzer icons will be displayed on the Explore View along with the standard StreamAnalyzer icons.



The CorrosionAnalyzer calculations are available from the Calculations Menu



One final note: The *Corrosion* database, required for the CorrosionAnalyzer™ is not automatically loaded for diagrams and rates calculations. The user will have to activate these databases.