

## **OLI Tips #24**

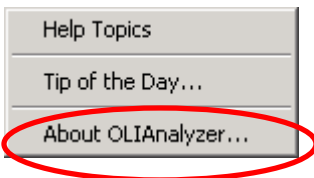
### **How to determine the version and build number of the OLI/Analyzers?**

From time to time, you may be required to determine the version and build numbers of the OLI/Analyzers. This is a simple task. Follow these steps:

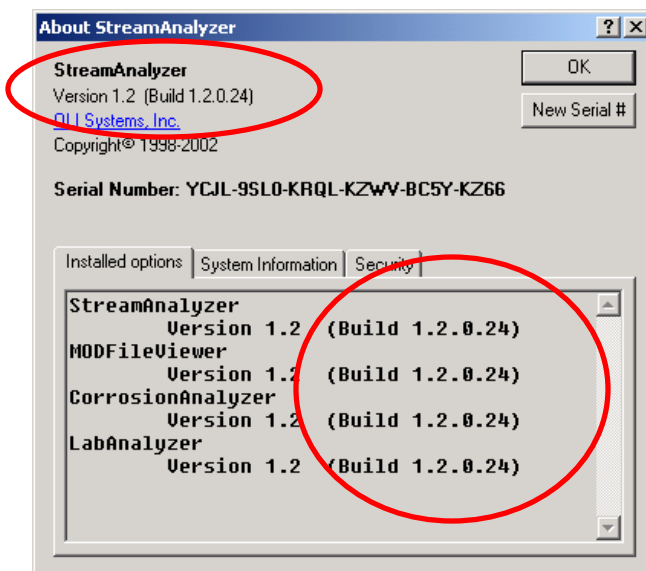
1. Select **HELP** from the menu line.



2. Select **About OLIAnalyzer...** from the drop down list.



3. The version number and build number for the Analyzer and its installed plug-ins will be displayed.



This is version 1.2 build .0.24