



**Value Through Technology**

## ***OLI Tips #22***

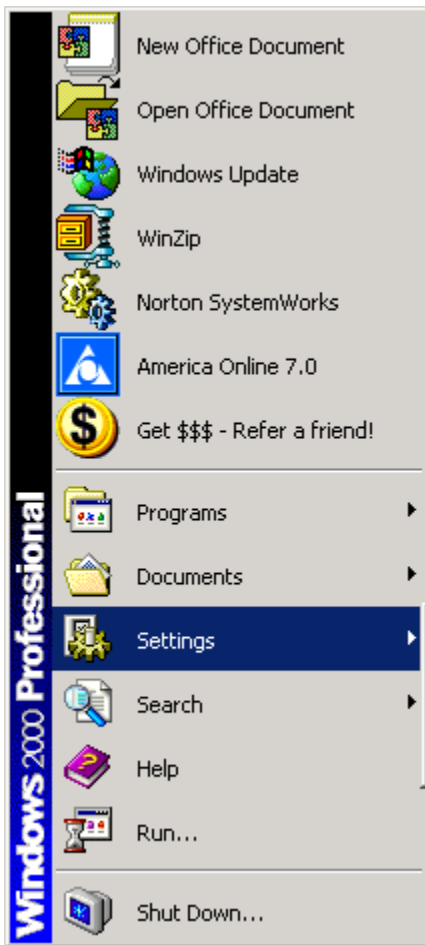
### ***Disabling the Pause in OLI***

Some users do not like to have the program to pause after the model generation or calculation. The pause feature (press any key to continue) can be suppressed by the use of an environmental variable.

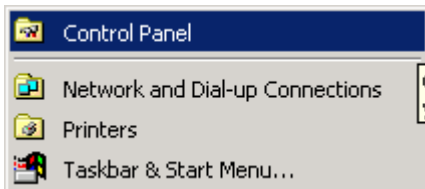
#### **Instructions for Windows NT/2000/XP**

To disable the pause and the beep in the OLI/Software (ESP, Toolkit, CSP) you must set an environmental variable. This can be done as follows:

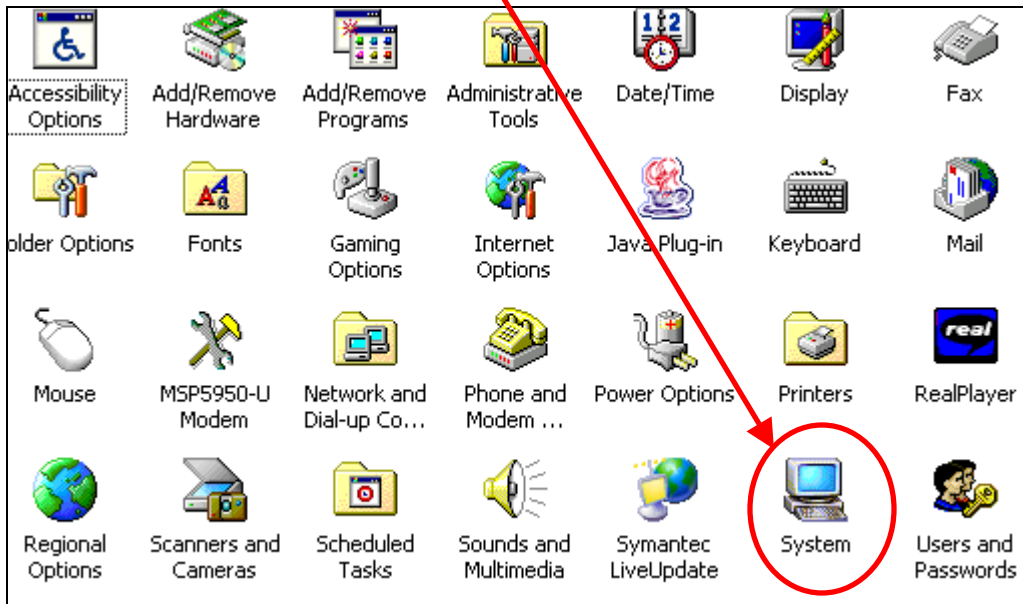
Using the start button, Select Settings.



Next, select Control Panel

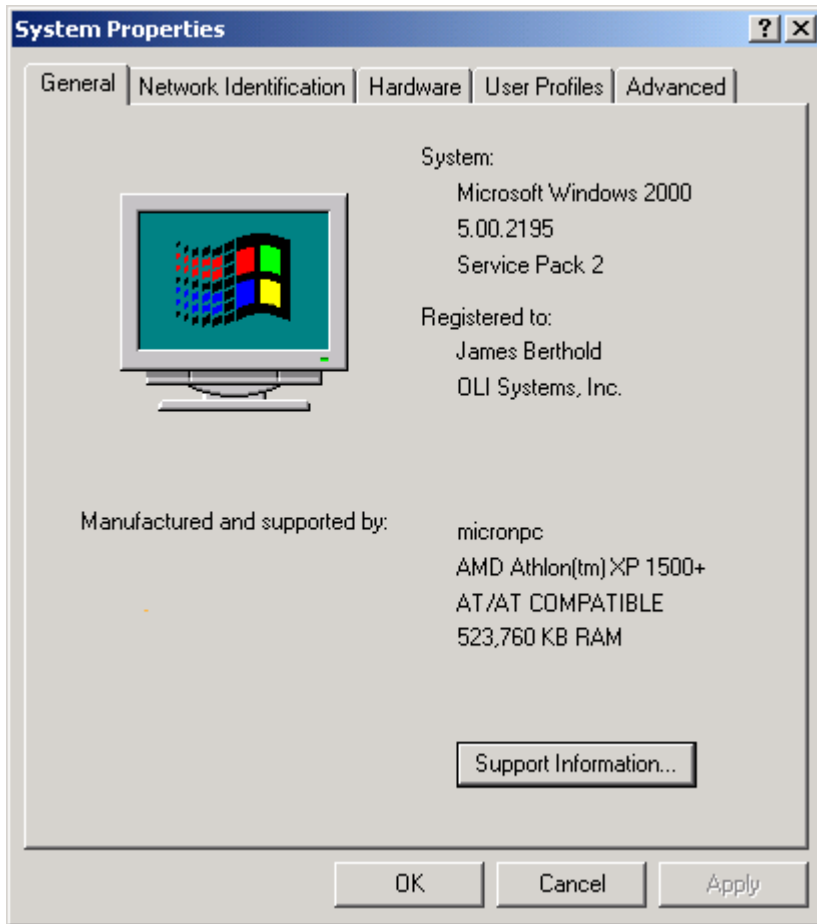


Find the icon or description for System and double-click the icon.

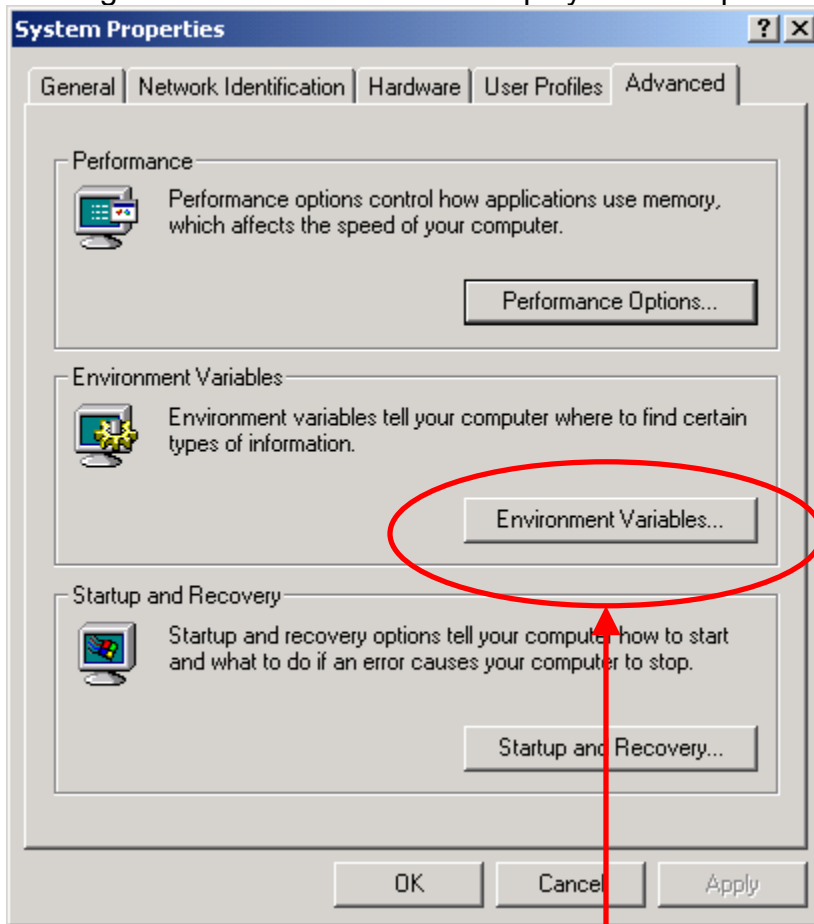


This will display the system properties. In the example below we have masked the name of the computer manufacturer and the serial number of the operating system. These are not important for this task.

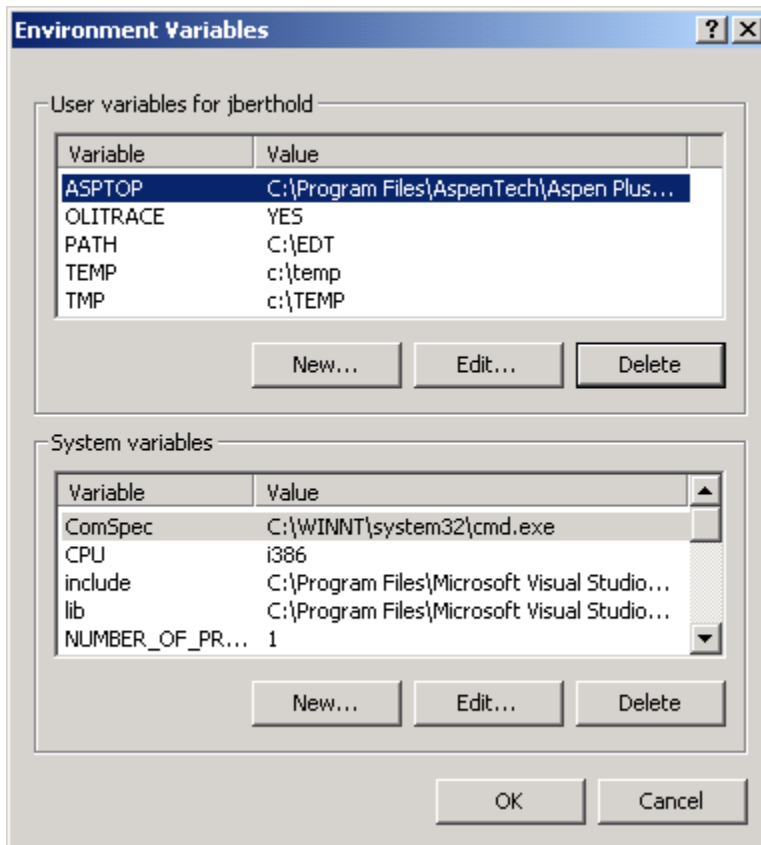
Click on the advanced tab.



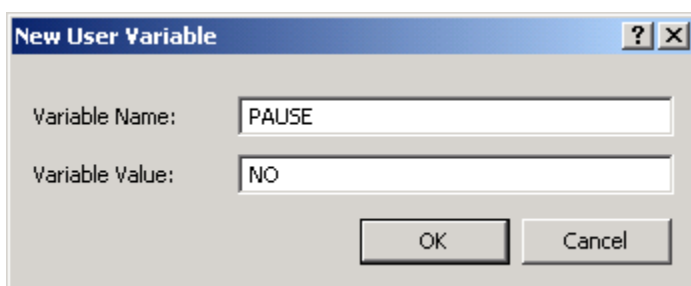
Clicking on the Advanced tab will display several options.



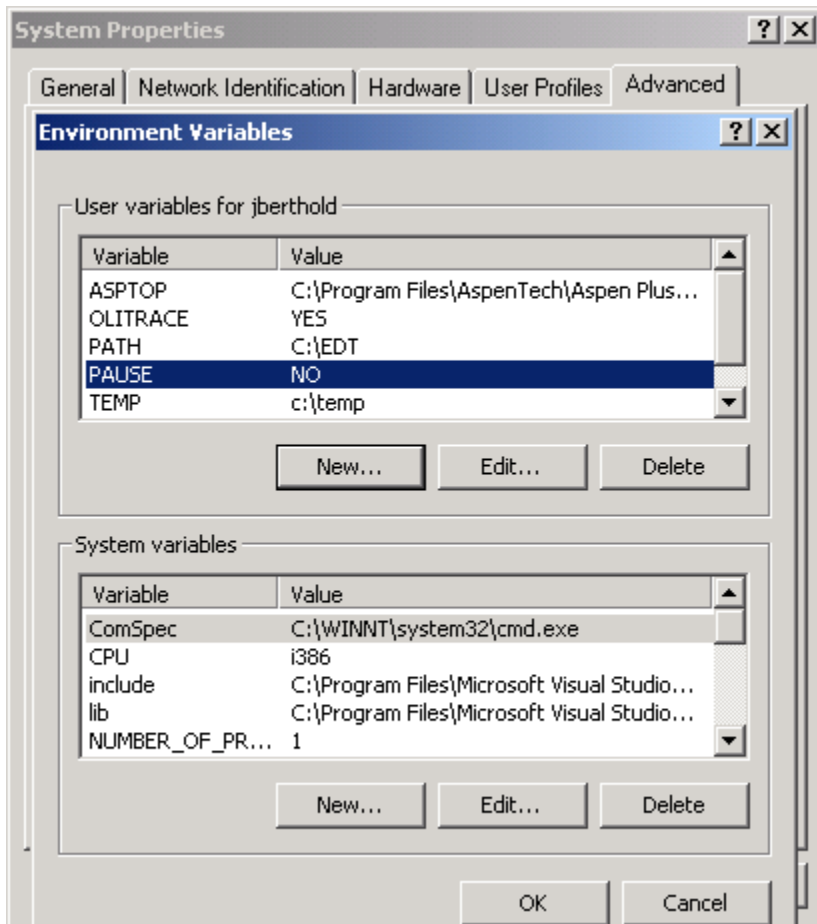
Click on the Environmental Variables... button. This will display a new dialog.



In this dialog you can add environmental variables to either the local user (recommended) or as a system variable for all users on your computer. In this example we are adding the environmental variable to the user. Click on the New... button.



Add these two values. The new environmental variable is PAUSE and its setting is NO. Click on the OK button to continue.



The environmental variable PAUSE has been added. It is now ready for use.

## Instructions for Windows 95/98/Me

These operating systems still use DOS as part of the operating system. You must edit the autoexec.bat file and add the environmental variable. You may do this using several methods. We recommend that you use NOTEPAD and edit the AUTOEXEC.BAT file located in the root folder of drive C:

Add the following statement:

```
SET PAUSE=NO
```

This adds the environmental variable.

You must reboot the computer.