

OLI Systems Inc.

OLI Flowsheet: ESP Getting Started

A quick start guide for OLI Flowsheet: ESP

OLI Systems Inc.
4/22/2016

Overview

OLI Systems, Inc. is introducing its process simulation software OLI Flowsheet: ESP with a new user interface. An overall goal for this product launch is to replace ESP (Original) with a modern interface. Another important factor is using many of the OLI Studio features that our users have benefited from.

A screenshot of OLI Flowsheet: ESP in action:

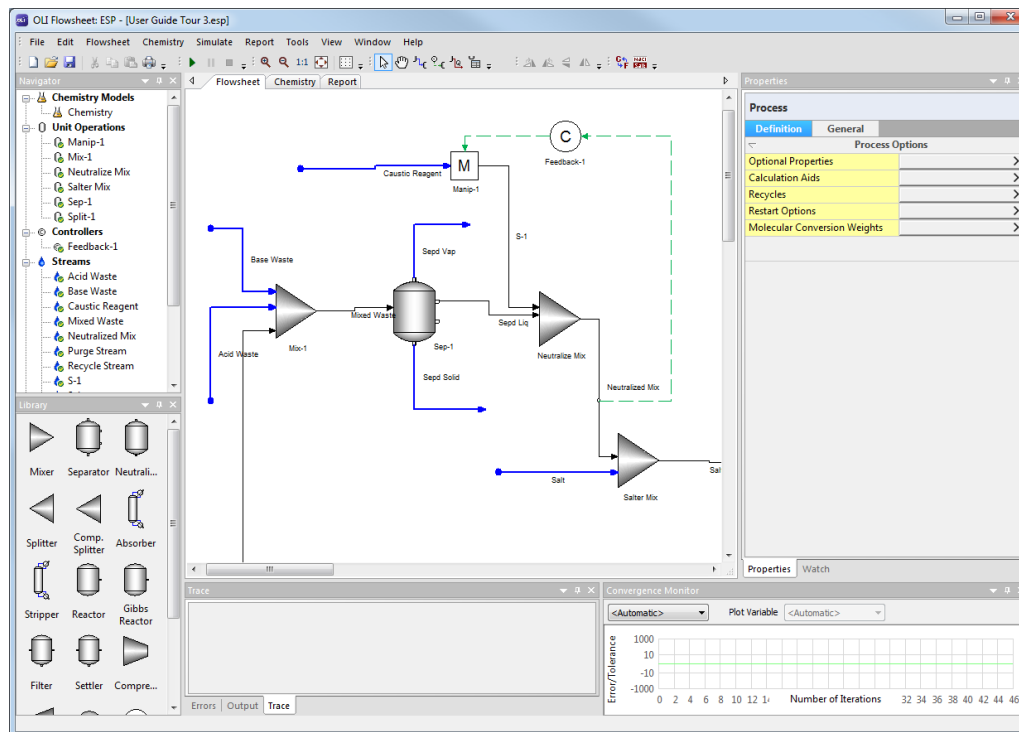


Figure 1: The OLI Flowsheet: ESP user interface

This getting started guide will take you on a small tour of the user interface and will give you an option to explore more help articles.

Navigator pane

You will find the objects you added in here. Your process simulation blocks like Mixer or Separator will be under Unit Operations.

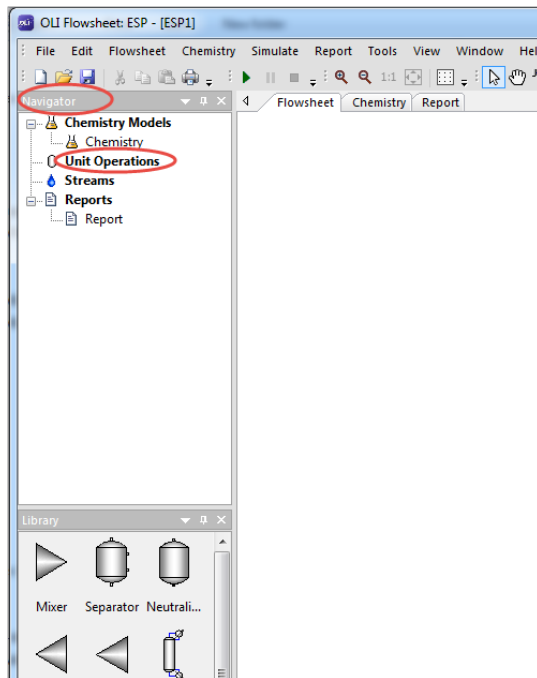


Figure 2: Navigator pane

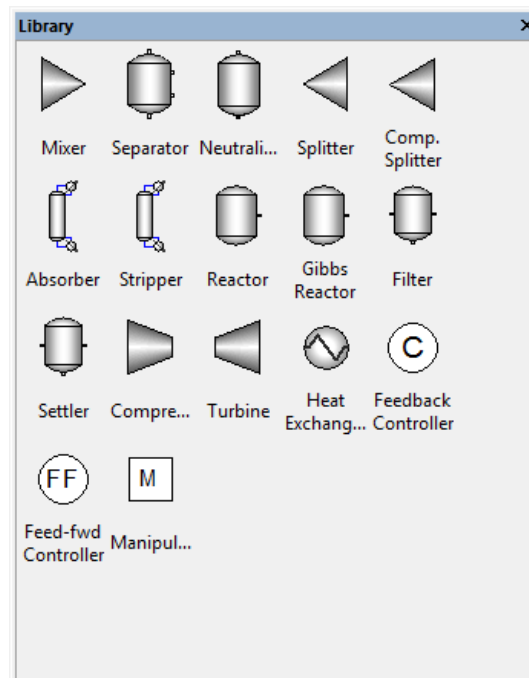


Figure 3: Library of unit operations

Library

All the unit operations supported in OLI Flowsheet: ESP are shown in the library. To add one of these blocks to the flowsheet, drag and drop the icon to the flowsheet section to the right of the navigator pane.

Properties

The properties pane is used for defining the components of the flowsheet. This is where you will input the specifications for streams and unit operations.

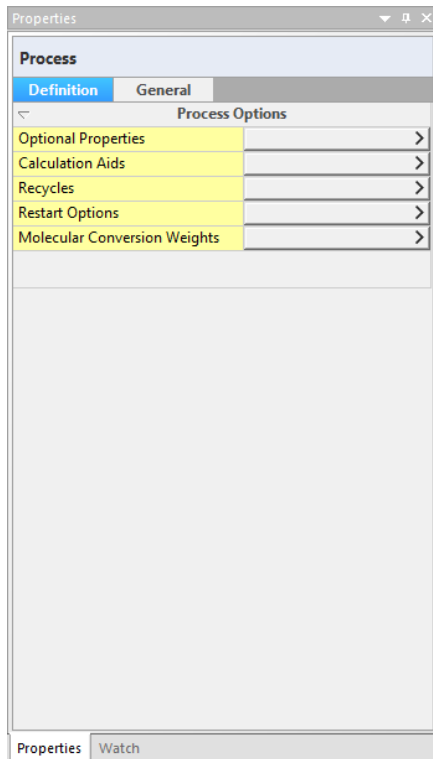


Figure 4: Process options

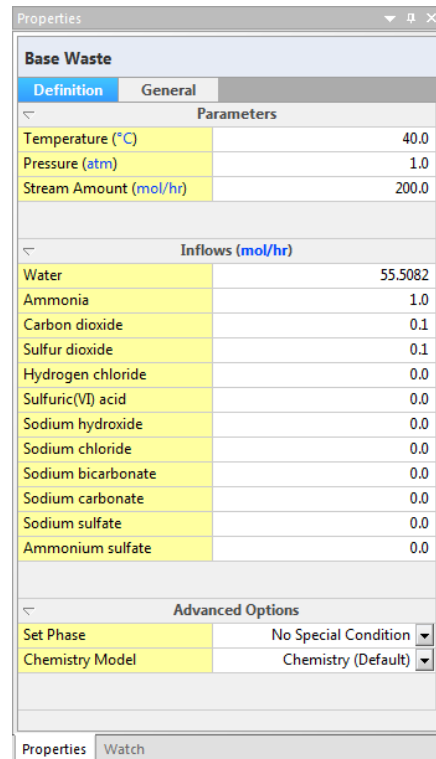
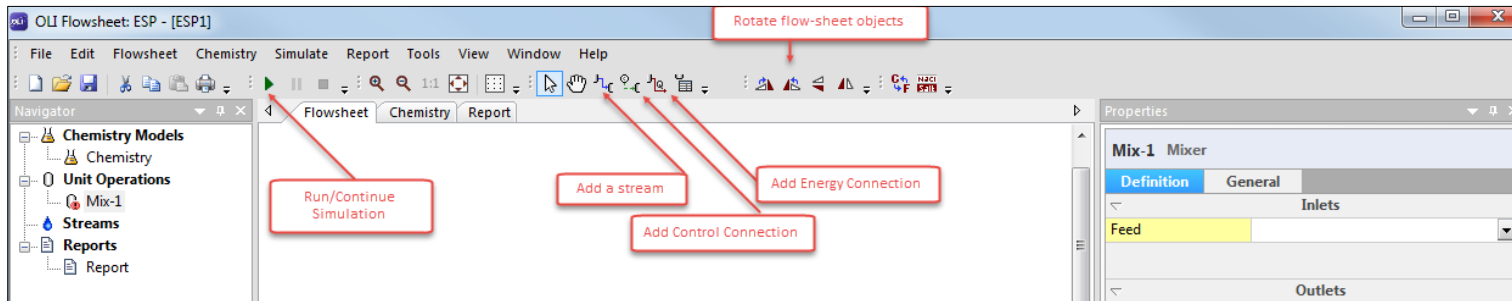


Figure 5: Stream definition

Toolbar

OLI Flowsheet: ESP is equipped with a toolbar for accessibility to convenient tools.



Comment [AA1]: In the text box below, "flowsheet" should be one word (not "flow-sheet")

Additional support videos and user guide

For more detailed illustrations about how to use this software, please visit OLI Flowsheet: ESP's page on OLI's Wiki:

http://wiki.olisystems.com/wiki/OLI_Flowsheet:_ESP

Disclaimer

This manual was produced using a beta version of OLI Flowsheet: ESP. As time progresses, new data and refinements to existing data sets can result in values that you obtain being slightly different than what is presented in this manual. This is a natural progress and cannot be avoided. When large systematic changes to the software occur, this manual will be updated.